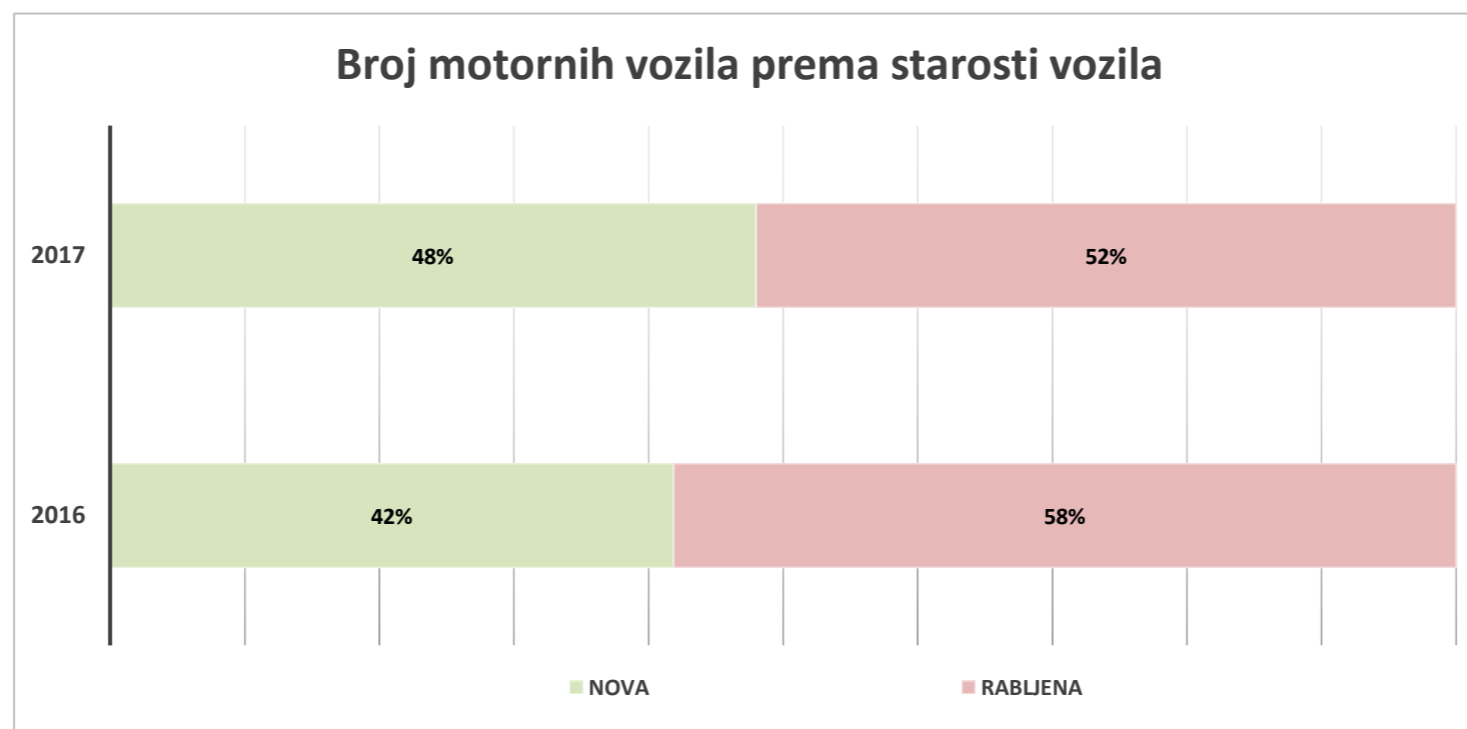


POSEBNI POREZ NA MOTORNA VOZILA 2017

1. Broj motornih vozila i obračunati posebni porez na motorna vozila
2. Broj motornih vozila i obračunati posebni porez na motorna vozila po mjesecima
3. Broj novih motornih vozila i obračunati posebni porez na motorna vozila
4. Broj rabljenih motornih vozila i obračunati posebni porez na motorna vozila
5. Prosječno obračunati posebni porez na motorna vozila
6. Broj osobnih i pick-up vozila (KN 8703) i obračunati posebni porez prema vrsti goriva
7. Broj osobnih i pick-up vozila prema vrsti goriva i emisiji CO₂
8. Broj motocikala i ATV vozila prema razini emisije ispušnih plinova
9. Broj motornih vozila prema marki vozila
10. Top 20 motornih vozila prema marki i vrsti goriva
11. Broj rabljenih motornih vozila prema godini proizvodnje - starost vozila
12. Broj motornih vozila po carinskim uredima
13. Broj rabljenih motornih vozila iz poreznih rješenja prema nastanku i načinu utvrđivanja porezne obveze
14. Ostvareni prihodi / isplaćeni povrati od posebnog poreza na motorna vozila
15. Obračunati povrat posebnog poreza na motorna vozila
16. Broj osobnih i pick-up vozila (KN 8703) prema vrsti goriva - 2013.* - 2017.

BROJ MOTORNIH VOZILA I OBRAČUNATI POSEBNI POREZ NA MOTORNA VOZILA

Predmet oporezivanja	BROJ VOZILA		2017 / 2016 (%)	OBRAČUNATI PPMV (kn)		2017 / 2016 (%)
	2016	2017		2016	2017	
Osobna i pick-up vozila (KN 8703)	44.915	51.407	14,45%	615.863.470	699.149.678	13,52%
Pick-up vozila (KN 8704)	0	115		0	3.067.227	
Motocikli, ATV vozila...	2.158	2.317	7,37%	10.281.139	9.389.283	-8,67%
NOVA VOZILA	47.073	53.839	14,37%	626.144.609	711.606.188	13,65%
Osobna i pick-up vozila (KN 8703)	63.821	56.350	-11,71%	458.326.533	466.293.652	1,74%
Pick-up vozila (KN 8704)	0	15		0	169.825	
Motocikli, ATV vozila...	1.500	1.985	32,33%	5.402.280	6.578.627	21,78%
RABLJENA VOZILA	65.321	58.350	-10,67%	463.728.813	473.042.104	2,01%
Osobna i pick-up vozila (KN 8703)	108.736	107.757	-0,90%	1.074.190.003	1.165.443.330	8,50%
Pick-up vozila (KN 8704)	0	130		0	3.237.052	
Motocikli, ATV vozila...	3.658	4.302	17,61%	15.683.419	15.967.910	1,81%
MOTORNA VOZILA - UKUPNO	112.394	112.189	-0,18%	1.089.873.422	1.184.648.292	8,70%



Izvor podataka: IS CURH (na dan 15.2.2018.)

BROJ MOTORNIH VOZILA I OBRAČUNATI POSEBNI POREZ NA MOTORNA VOZILA

VRSTA VOZILA	OSOBNA I				OSOBNA I				OSOBNA I			
	PICK-UP VOZILA (KN 8703)	PICK-UP VOZILA (KN 8704)	MOTOCIKLI, ATV VOZILA	UKUPNO	PICK-UP VOZILA (KN 8703)	PICK-UP VOZILA (KN 8704)	MOTOCIKLI, ATV VOZILA	UKUPNO	PICK-UP VOZILA (KN 8703)	PICK-UP VOZILA (KN 8704)	MOTOCIKLI, ATV VOZILA	UKUPNO
STAROST VOZILA	NOVA VOZILA											
GODINA / MJESEC	2016				2017				2017 / 2016 (%)			
SIJEČANJ	2.123		74	2.197	2.031	3	38	2.072	-4,33%		-48,65%	-5,69%
VELJAČA	2.630		100	2.730	2.959	4	73	3.036	12,51%		-27,00%	11,21%
OŽUJAK	4.330		176	4.506	5.658	5	204	5.867	30,67%		15,91%	30,20%
TRAVANJ	5.160		289	5.449	6.451	1	271	6.723	25,02%		-6,23%	23,38%
SVIBANJ	6.197		261	6.458	8.795	11	387	9.193	41,92%		48,28%	42,35%
LIPANJ	6.326		246	6.572	6.823	7	386	7.216	7,86%		56,91%	9,80%
SRPANJ	3.223		325	3.548	3.769	17	315	4.101	16,94%		-3,08%	15,59%
KOLOVOZ	2.361		188	2.549	2.481	8	254	2.743	5,08%		35,11%	7,61%
RUJAN	2.603		182	2.785	2.831	9	135	2.975	8,76%		-25,82%	6,82%
LISTOPAD	2.909		95	3.004	3.643	14	105	3.762	25,23%		10,53%	25,23%
STUDENI	2.893		82	2.975	3.591	14	72	3.677	24,13%		-12,20%	23,60%
PROSINAC	4.160		140	4.300	2.375	22	77	2.474	-42,91%		-45,00%	-42,47%
BROJ VOZILA	44.915	0	2.158	47.073	51.407	115	2.317	53.839	14,45%		7,37%	14,37%

SIJEČANJ	32.710.014		333.622	33.043.636	29.108.196	81.000	125.240	29.314.436	-11,01%		-62,46%	-11,29%
VELJAČA	39.202.966		560.258	39.763.224	41.074.103	118.377	394.219	41.586.698	4,77%		-29,64%	4,59%
OŽUJAK	55.658.088		1.148.926	56.807.015	74.550.868	139.500	1.061.824	75.752.191	33,94%		-7,58%	33,35%
TRAVANJ	72.142.872		1.596.921	73.739.793	86.618.841	37.125	1.358.052	88.014.017	20,07%		-14,96%	19,36%
SVIBANJ	75.732.632		1.272.810	77.005.441	104.671.705	292.275	1.524.721	106.488.701	38,21%		19,79%	38,29%
LIPANJ	71.443.813		1.196.701	72.640.514	84.770.984	184.950	1.293.242	86.249.176	18,65%		8,07%	18,73%
SRPANJ	47.233.978		1.331.179	48.565.158	58.531.427	448.200	1.083.696	60.063.324	23,92%		-18,59%	23,68%
KOLOVOZ	35.404.101		701.745	36.105.846	36.201.260	205.650	893.845	37.300.755	2,25%		27,37%	3,31%
RUJAN	42.464.491		907.990	43.372.481	43.207.401	248.400	591.349	44.047.150	1,75%		-34,87%	1,56%
LISTOPAD	38.617.926		423.805	39.041.731	52.321.193	367.425	488.723	53.177.341	35,48%		15,32%	36,21%
STUDENI	38.774.706		259.321	39.034.027	51.705.456	373.725	351.857	52.431.038	33,35%		35,68%	34,32%
PROSINAC	66.477.883		547.862	67.025.745	36.388.245	570.600	222.516	37.181.361	-45,26%		-59,38%	-44,53%
OBRAČUNATI PPMV - kn	615.863.470	0	10.281.139	626.144.609	699.149.678	3.067.227	9.389.283	711.606.188	13,52%		-8,67%	13,65%

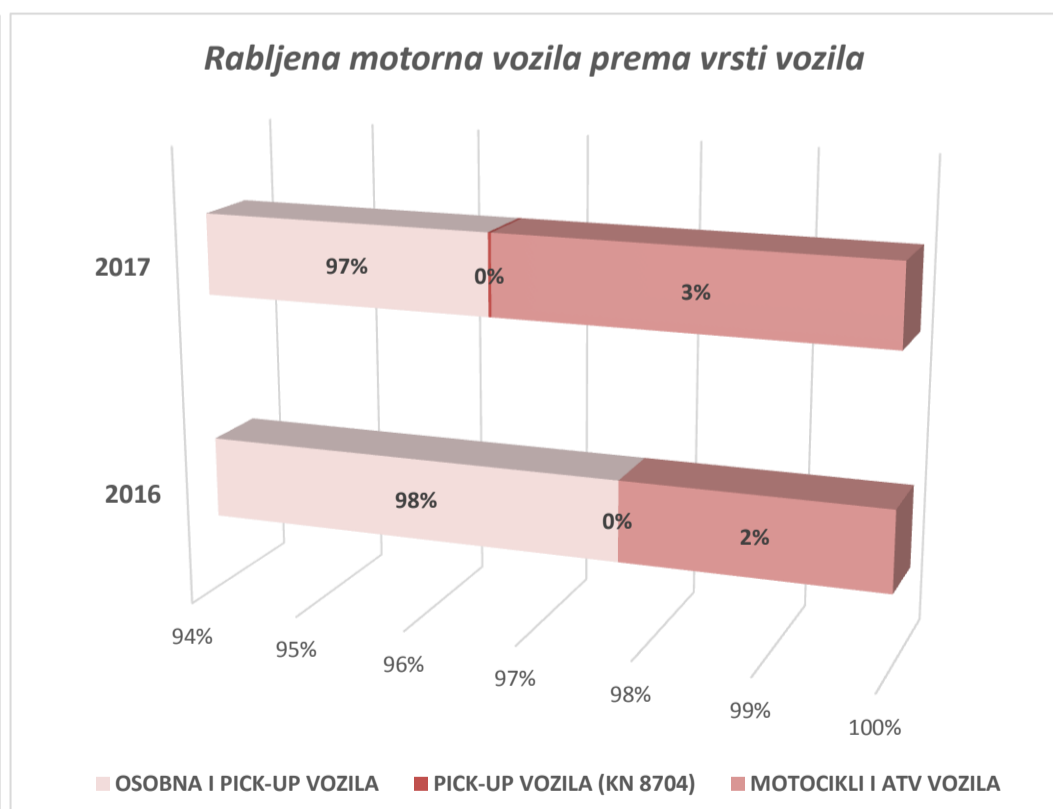
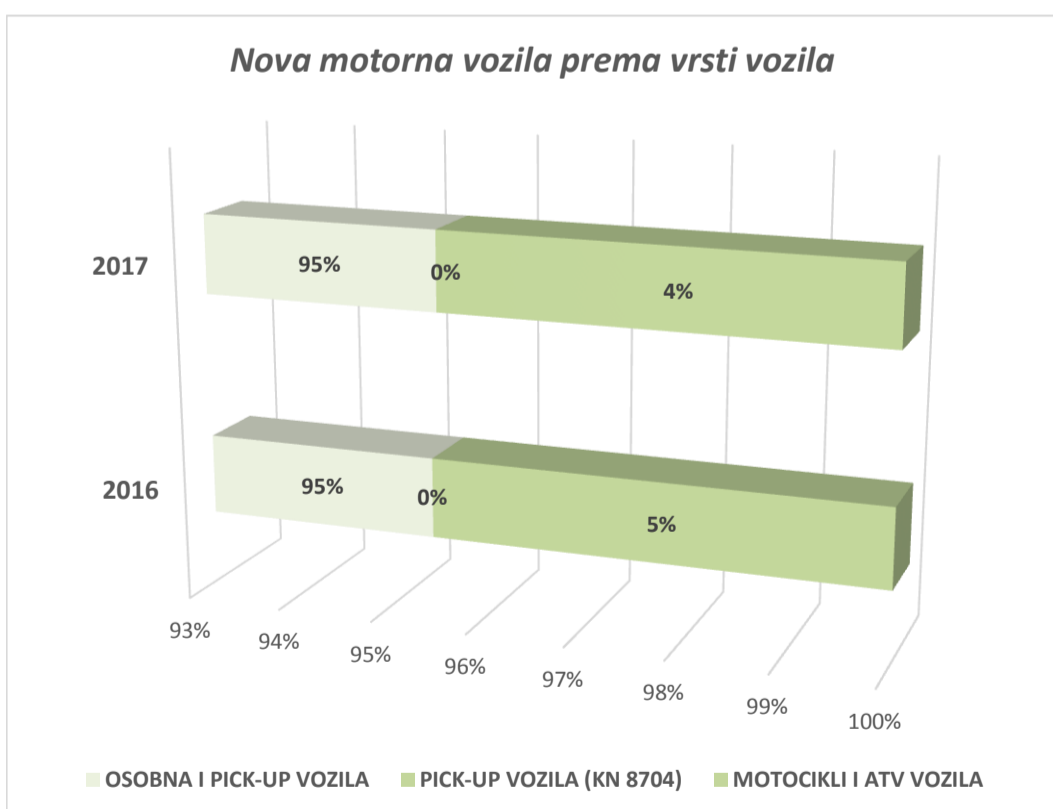
VRSTA VOZILA	OSOBNA I				OSOBNA I				OSOBNA I			
	PICK-UP VOZILA (KN 8703)	PICK-UP VOZILA (KN 8704)	MOTOCIKLI, ATV VOZILA	UKUPNO	PICK-UP VOZILA (KN 8703)	PICK-UP VOZILA (KN 8704)	MOTOCIKLI, ATV VOZILA	UKUPNO	PICK-UP VOZILA (KN 8703)	PICK-UP VOZILA (KN 8704)	MOTOCIKLI, ATV VOZILA	UKUPNO
STAROST VOZILA	RABLJENA VOZILA											
GODINA / MJESEC	2016				2017				2017 / 2016 (%)			
SIJEČANJ	3.396		49	3.445	2.516	0	31	2.547	-25,91%		-36,73%	-26,07%
VELJAČA	4.363		88	4.451	3.900	0	86	3.986	-10,61%		-2,27%	-10,45%
OŽUJAK	4.767		129	4.896	4.905	1	172	5.078	2,89%		33,33%	3,72%
TRAVANJ	4.388		139	4.527	4.467	0	201	4.668	1,80%		44,60%	3,11%
SVIBANJ	4.760		140	4.900	5.767	1	262	6.030	21,16%		87,14%	23,06%
LIPANJ	4.695		172	4.867	4.552	1	216	4.769	-3,05%		25,58%	-2,01%
SRPANJ	4.851		128	4.979	4.961	0	239	5.200	2,27%		86,72%	4,44%
KOLOVOZ	4.539		152	4.691	4.471	2	214	4.687	-1,50%		40,79%	-0,09%
RUJAN	5.400		110	5.510	5.406	2	164	5.572	0,11%		49,09%	1,13%
LISTOPAD	5.877		87	5.964	6.291	2	182	6.475	7,04%		109,20%	8,57%
STUDENI	5.730		107	5.837	5.500	1	131	5.632	-4,01%		22,43%	-3,51%
PROSINAC	11.055		199	11.254	3.614	5	87	3.706	-67,31%		-56,28%	-67,07%
BROJ VOZILA	63.821	0	1.500	65.321	56.350	15	1.985	58.350	-11,71%		32,33%	-10,67%

SIJEČANJ	25.200.467		216.553	25.417.020	24.287.571	0	110.492	24.398.064	-3,62%		-48,98%	-4,01%
VELJAČA	31.954.189		349.770	32.303.958	33.883.150	0	342.794	34.225.944	6,04%		-1,99%	5,95%
OŽUJAK	35.354.836		504.911	35.859.747	41.040.702	4.657	655.511	41.700.870	16,08%		29,83%	16,29%
TRAVANJ	31.465.753		473.128	31.938.880	37.858.317	0	740.117	38.598.434	20,32%		56,43%	20,85%
SVIBANJ	34.911.007		489.785	35.400.793	46.915.202	15.088	809.148	47.739.437	34,39%		65,20%	34,85%
LIPANJ	32.921.980		619.554	33.541.533	35.567.403	43.144	665.979	36.276.526	8,04%		7,49%	8,15%
SRPANJ	34.188.191		422.244	34.610.435	41.852.003	0	681.432	42.533.434	22,42%		61,38%	22,89%
KOLOVOZ	32.040.317		499.708	32.540.025	36.905.729	14.522	653.716	37.573.967	15,19%		30,82%	15,47%
RUJAN	37.276.329		389.446	37.665.775	44.762.461	22.814	577.972	45.363.246	20,08%		48,41%	20,44%
LISTOPAD	41.682.470		297.169	41.979.640	54.500.708	7.721	610.276	55.118.706	30,75%		105,36%	31,30%
STUDENI	38.976.371		394.780	39.371.151	43.090.648	3.802	403.876	43.498.326	10,56%		2,30%	10,48%
PROSINAC	82.354.623		745.232	83.099.855	25.629.757	58.078	327.315	26.015.150	-68,88%		-56,08%	-68,69%
OBRAČUNATI PPMV - kn	458.326.533	0	5.402.280	463.728.813	466.293.652	169.825	6.578.627	473.042.104	1,74%		21,78%	2,01%

BROJ MOTORNIH VOZILA I OBRAČUNATI POSEBNI POREZ NA MOTORNA VOZILA

VRSTA VOZILA	OSOBNA I PICK-UP VOZILA (KN 8703)	PICK-UP VOZILA (KN 8704)	MOTOCIKLI, ATV VOZILA	UKUPNO	OSOBNA I PICK-UP VOZILA (KN 8703)	PICK-UP VOZILA (KN 8704)	MOTOCIKLI, ATV VOZILA	UKUPNO	OSOBNA I PICK-UP VOZILA (KN 8703)	PICK-UP VOZILA (KN 8704)	MOTOCIKLI, ATV VOZILA	UKUPNO	
					MOTORNA VOZILA - UKUPNO								
STAROST VOZILA													
GODINA / MJESEC	2016				2017				2017 / 2016 (%)				
SIJEČANJ	5.519	0	123	5.642	4.547	3	69	4.619	-17,61%			-43,90%	-18,13%
VELJAČA	6.993	0	188	7.181	6.859	4	159	7.022	-1,92%			-15,43%	-2,21%
OŽUJAK	9.097	0	305	9.402	10.563	6	376	10.945	16,12%			23,28%	16,41%
TRAVANJ	9.548	0	428	9.976	10.918	1	472	11.391	14,35%			10,28%	14,18%
SVIBANJ	10.957	0	403	11.358	14.562	12	649	15.223	32,90%			61,85%	34,03%
LIPANJ	11.021	0	418	11.439	11.375	8	602	11.985	3,21%			44,02%	4,77%
SRPANJ	8.074	0	453	8.527	8.730	17	554	9.301	8,12%			22,30%	9,08%
KOLOVOZ	6.900	0	340	7.240	6.952	10	468	7.430	0,75%			37,65%	2,62%
RUJAN	8.003	0	292	8.295	8.237	11	299	8.547	2,92%			2,40%	3,04%
LISTOPAD	8.786	0	182	8.968	9.934	16	287	10.237	13,07%			57,69%	14,15%
STUDENI	8.623	0	189	8.812	9.091	15	203	9.309	5,43%			7,41%	5,64%
PROSINAC	15.215	0	339	15.554	5.989	27	164	6.180	-60,64%			-51,62%	-60,27%
BROJ VOZILA	108.736	0	3.658	112.394	107.757	130	4.302	112.189	-0,90%			17,61%	-0,18%
SIJEČANJ	57.910.481	0	550.175	58.460.655	53.395.767	81.000	235.732	53.712.499	-7,80%			-57,15%	-8,12%
VELJAČA	71.157.155	0	910.027	72.067.182	74.957.253	118.377	737.012	75.812.642	5,34%			-19,01%	5,20%
OŽUJAK	91.012.924	0	1.653.838	92.666.762	115.591.570	144.157	1.717.335	117.453.062	27,01%			3,84%	26,75%
TRAVANJ	103.608.625	0	2.070.048	105.678.673	124.477.158	37.125	2.098.169	126.612.452	20,14%			1,36%	19,81%
SVIBANJ	110.643.639	0	1.762.595	112.406.234	151.586.907	307.363	2.333.869	154.228.139	37,00%			32,41%	37,21%
LIPANJ	104.365.793	0	1.816.254	106.182.047	120.338.387	228.094	1.959.221	122.525.702	15,30%			7,87%	15,39%
SRPANJ	81.422.170	0	1.753.423	83.175.593	100.383.430	448.200	1.765.128	102.596.758	23,29%			0,67%	23,35%
KOLOVOZ	67.444.417	0	1.201.454	68.645.871	73.106.989	220.172	1.547.561	74.874.722	8,40%			28,81%	9,07%
RUJAN	79.740.820	0	1.297.436	81.038.256	87.969.862	271.214	1.169.320	89.410.396	10,32%			-9,87%	10,33%
LISTOPAD	80.300.396	0	720.974	81.021.370	106.821.901	375.146	1.098.999	108.296.047	33,03%			52,43%	33,66%
STUDENI	77.751.077	0	654.101	78.405.178	94.796.104	377.527	755.733	95.929.364	21,92%			15,54%	22,35%
PROSINAC	148.832.506	0	1.293.094	150.125.600	62.018.002	628.678	549.831	63.196.511	-58,33%			-57,48%	-57,90%
OBRAČUNATI PPMV - kn	1.074.190.003	0	15.683.419	1.089.873.422	1.165.443.330	3.237.052	15.967.910	1.184.648.292	8,50%			1,81%	8,70%

Izvor podataka: IS CURH (na dan 15.2.2018.)



BROJ MOTORNIH VOZILA I OBRAČUNATI POSEBNI POREZ NA MOTORNA VOZILA

OSOBNIA I PICK-UP VOZILA (KN 8703)

NOVA VOZILA

EMISIJA CO2	BROJ VOZILA	Broj vozila udio (%)	OBRAČ. PPMV	Obrač. PPMV - udio (%)	BROJ VOZILA	Broj vozila udio (%)	OBRAČ. PPMV	Obrač. PPMV - udio (%)	2017 / 2016 (%)	
									BROJ VOZILA	OBRAČ. PPMV
			2016				2017			
0 - 69					2	0,00%	129.875	0,02%		
70 - 85	629	1,34%	2.118.672	0,34%	1.281	2,38%	4.371.946	0,61%	103,7%	106,35%
86 - 120	22.316	47,41%	236.790.644	37,82%	21.452	39,84%	270.284.779	37,98%	-3,9%	14,15%
121 - 140	3.611	7,67%	103.287.101	16,50%	3.683	6,84%	123.032.310	17,29%	2,0%	19,12%
141 - 160 / 170	1.381	2,93%	89.385.071	14,28%	1.906	3,54%	80.168.980	11,27%	38,0%	-10,31%
171 - 200	496	1,05%	58.972.627	9,42%	216	0,40%	31.949.756	4,49%	-56,5%	-45,82%
201 -	81	0,17%	6.786.046	1,08%	48	0,09%	4.154.033	0,58%	-40,7%	-38,79%
DIESEL	28.514	60,6%	497.340.161	79,4%	28.588	53,1%	514.091.680	72,2%	0,3%	3,4%
0 - 74					33	0,06%	2.270.443	0,32%		
75 - 90	274	0,61%	2.446.628	0,40%	366	0,68%	2.852.377	0,40%	33,6%	16,58%
91 - 120	11.764	26,19%	48.921.665	7,94%	15.580	28,94%	78.833.259	11,08%	32,4%	61,14%
121 - 140	3.619	8,06%	37.365.706	6,07%	5.371	9,98%	54.385.705	7,64%	48,4%	45,55%
141 - 160 / 170	647	1,44%	14.985.814	2,43%	1.394	2,59%	29.836.902	4,19%	115,5%	99,10%
171 - 200	70	0,16%	7.190.461	1,17%	38	0,07%	5.587.471	0,79%	-45,7%	-22,29%
201 -	27	0,06%	7.613.035	1,24%	37	0,07%	11.291.839	1,59%	37,0%	48,32%
BENZIN,UNP, ...	16.401	34,8%	118.523.309	18,9%	22.819	42,4%	185.057.998	26,0%	39,1%	56,1%
UKUPNO	44.915	95,4%	615.863.470	98,4%	51.407	95,5%	699.149.678	98,2%	14,5%	13,5%

MOTOCIKLI, ATV VOZILA

RAZINA EMISIJE ISPUŠNIH PLINOVA	BROJ VOZILA	Broj vozila udio (%)	OBRAČ. PPMV	Obrač. PPMV - udio (%)	BROJ VOZILA	Broj vozila udio (%)	OBRAČ. PPMV	Obrač. PPMV - udio (%)	2017 / 2016 (%)	
									BROJ VOZILA	OBRAČ. PPMV
			2016				2017			
ispod 51										
51 - 125					1	0,00%	1.125	0,00%		
126 - 400					2	0,00%	3.848	0,00%		
401 - 800					1	0,00%	3.852	0,00%		
801 - 1000										
1001 -										
EURO I	0		0		4	0,0%	8.825	0,00%		
ispod 51	5	0,01%	9.998	0,00%					-100,0%	-100,0%
51 - 125	2	0,00%	2.978	0,00%	2	0,00%	1.625	0,00%	0,0%	-45,4%
126 - 400	114	0,24%	402.701	0,06%	78	0,14%	313.068	0,04%	-31,6%	-22,3%
401 - 800	46	0,10%	384.705	0,06%	8	0,01%	43.324	0,01%	-82,6%	-88,7%
801 - 1000	5	0,01%	78.133	0,01%	2	0,00%	24.758	0,00%	-60,0%	-68,3%
1001 -	1	0,00%	3.400	0,00%	2	0,00%	1.999	0,00%	100,0%	-41,2%
EURO II	173	0,4%	881.915	0,1%	92	0,2%	384.774	0,1%	-46,8%	-56,4%
ispod 51	3	0,01%	6.993	0,00%					-100,0%	-100,0%
51 - 125	212	0,45%	348.139	0,06%	103	0,19%	107.702	0,02%	-51,4%	-69,1%
126 - 400	845	1,80%	2.315.104	0,37%	209	0,39%	434.100	0,06%	-75,3%	-81,2%
401 - 800	460	0,98%	2.401.173	0,38%	147	0,27%	714.234	0,10%	-68,0%	-70,3%
801 - 1000	155	0,33%	1.267.634	0,20%	34	0,06%	321.283	0,05%	-78,1%	-74,7%
1001 -	310	0,66%	3.060.182	0,49%	72	0,13%	551.175	0,08%	-76,8%	-82,0%
EURO III	1.985	4,2%	9.399.225	1,5%	565	1,0%	2.128.495	0,3%	-71,5%	-77,4%
ispod 51										
51 - 125					129	0,24%	72.635	0,01%		
126 - 400					585	1,09%	848.881	0,12%		
401 - 800					467	0,87%	1.576.077	0,22%		
801 - 1000					284	0,53%	1.958.337	0,28%		
1001 -					191	0,35%	2.411.260	0,34%		
EURO IV	0		0		1.656	3,1%	6.867.189	1,0%		
UKUPNO	2.158	4,6%	10.281.139	1,6%	2.317	4,3%	9.389.283	1,3%	7,4%	-8,7%

PICK-UP VOZILA (KN 8704)

SNAGA MOTORA (kW)	BROJ VOZILA	Broj vozila udio (%)	OBRAČ. PPMV	Obrač. PPMV - udio (%)	BROJ VOZILA	Broj vozila udio (%)	OBRAČ. PPMV	Obrač. PPMV - udio (%)	2017 / 2016 (%)	
									BROJ VOZILA	OBRAČ. PPMV
			2016				2017			
0 - 100										
101 - 200					115	0,21%	3.067.227	0,43%		
201 - 300										
301 -										
UKUPNO	0		0		115	0,2%	3.067.227	0,4%		
SVEUKUPNO	47.073	100,0%	626.144.609	100,0%	53.839	100,0%	711.606.188	100,0%	14,4%	13,6%

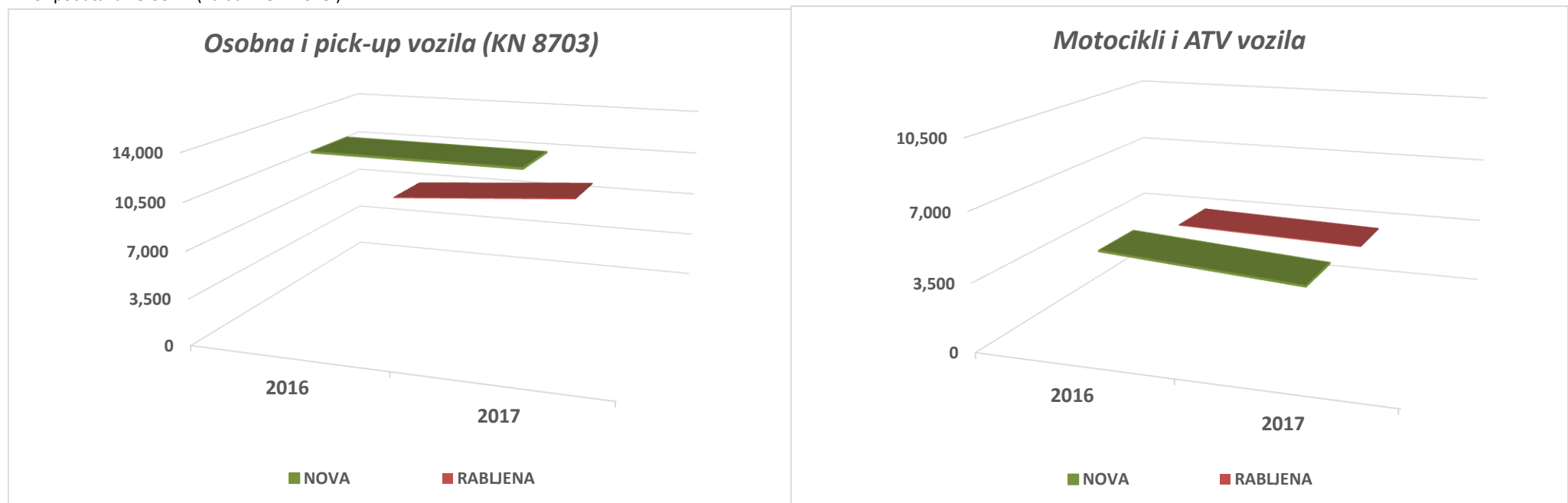
BROJ MOTORNIH VOZILA I OBRAČUNATI POSEBNI POREZ NA MOTORNA VOZILA

OSOBNIA I PICK-UP VOZILA (KN 8703)	RABLJENA VOZILA									
	2016				2017				2017 / 2016 (%)	
	BROJ VOZILA	Broj vozila udio (%)	OBRAČ. PPMV	Obrač. PPMV - udio (%)	BROJ VOZILA	Broj vozila udio (%)	OBRAČ. PPMV	Obrač. PPMV - udio (%)	BROJ VOZILA	OBRAČ. PPMV
EMISIJA CO2										
0 - 69					19	0,03%	148.583	0,03%		
70 - 85	89	0,14%	264.248	0,06%	370	0,63%	1.305.375	0,28%	315,7%	394,00%
86 - 120	20.616	31,56%	80.907.394	17,45%	30.692	52,60%	174.579.476	36,91%	48,9%	115,78%
121 - 140	15.619	23,91%	108.077.385	23,31%	12.829	21,99%	119.352.647	25,23%	-17,9%	10,43%
141 - 160 / 170	11.431	17,50%	110.600.528	23,85%	4.361	7,47%	85.869.149	18,15%	-61,8%	-22,36%
171 - 200	6.207	9,50%	84.881.331	18,30%	828	1,42%	29.909.223	6,32%	-86,7%	-64,76%
201 -	1.401	2,14%	25.169.809	5,43%	359	0,62%	10.255.421	2,17%	-74,4%	-59,26%
DIESEL	55.363	84,8%	409.900.694	88,4%	49.458	84,8%	421.419.875	89,1%	-10,7%	2,8%
0 - 74					27	0,05%	116.479	0,02%		
75 - 90	68	0,11%	532.932	0,12%	45	0,08%	231.025	0,05%	-33,8%	-56,65%
91 - 120	1.673	2,62%	2.696.761	0,59%	2.289	3,92%	5.136.534	1,09%	36,8%	90,47%
121 - 140	1.896	2,97%	6.651.221	1,45%	2.083	3,57%	8.578.444	1,81%	9,9%	28,98%
141 - 160 / 170	1.974	3,09%	8.547.191	1,86%	1.675	2,87%	11.827.292	2,50%	-15,1%	38,38%
171 - 200	2.130	3,34%	14.231.501	3,11%	548	0,94%	8.311.891	1,76%	-74,3%	-41,60%
201 -	717	1,12%	15.766.232	3,44%	225	0,39%	10.672.113	2,26%	-68,6%	-32,31%
BENZIN,UNP, ...	8.458	12,9%	48.425.839	10,4%	6.892	11,8%	44.873.777	9,5%	-18,5%	-7,3%
UKUPNO - 1, 3a	63.821	97,7%	458.326.533	98,8%	56.350	96,6%	466.293.652	98,6%	-11,7%	1,7%
MOTOCIKLI, ATV VOZILA										
RAZINA EMISIJE ISPUŠNIH PLINOVA	2016				2017				2017 / 2016 (%)	
	BROJ VOZILA	Broj vozila udio (%)	OBRAČ. PPMV	Obrač. PPMV - udio (%)	BROJ VOZILA	Broj vozila udio (%)	OBRAČ. PPMV	Obrač. PPMV - udio (%)	BROJ VOZILA	OBRAČ. PPMV
ispod 51	2	0,00%	1.033	0,00%					-100,0%	-100,0%
51 - 125	42	0,06%	50.823	0,01%	47	0,08%	29.216	0,01%	11,9%	-42,5%
126 - 400	44	0,07%	85.012	0,02%	42	0,07%	42.992	0,01%	-4,5%	-49,4%
401 - 800	180	0,28%	466.887	0,10%	153	0,26%	329.717	0,07%	-15,0%	-29,4%
801 - 1000	51	0,08%	183.483	0,04%	91	0,16%	304.995	0,06%	78,4%	66,2%
1001 -	67	0,10%	391.318	0,08%	58	0,10%	291.645	0,06%	-13,4%	-25,5%
EURO I	386	0,59%	1.178.555	0,25%	391	0,7%	998.565	0,21%	1,3%	-15,3%
ispod 51										
51 - 125	21	0,03%	24.067	0,01%	14	0,02%	5.230	0,00%	-33,3%	-78,3%
126 - 400	71	0,11%	114.707	0,02%	44	0,08%	59.980	0,01%	-38,0%	-47,7%
401 - 800	109	0,17%	341.990	0,07%	160	0,27%	364.833	0,08%	46,8%	6,7%
801 - 1000	32	0,05%	183.363	0,04%	71	0,12%	248.678	0,05%	121,9%	35,6%
1001 -	51	0,08%	305.457	0,07%	44	0,08%	244.502	0,05%	-13,7%	-20,0%
EURO II	284	0,4%	969.583	0,2%	333	0,6%	923.225	0,2%	17,3%	-4,8%
ispod 51										
51 - 125	41	0,06%	42.356	0,01%	54	0,09%	37.338	0,01%	31,7%	-11,8%
126 - 400	149	0,23%	277.969	0,06%	137	0,23%	151.704	0,03%	-8,1%	-45,4%
401 - 800	316	0,48%	1.010.287	0,22%	498	0,85%	1.227.579	0,26%	57,6%	21,5%
801 - 1000	120	0,18%	582.210	0,13%	286	0,49%	1.230.442	0,26%	138,3%	111,3%
1001 -	204	0,31%	1.341.321	0,29%	246	0,42%	1.776.174	0,38%	20,6%	32,4%
EURO III	830	1,3%	3.254.142	0,7%	1.221	2,1%	4.423.238	0,9%	47,1%	35,9%
ispod 51										
51 - 125					8	0,01%	3.980	0,00%		
126 - 400					2	0,00%	3.036	0,00%		
401 - 800					10	0,02%	36.945	0,01%		
801 - 1000					11	0,02%	60.975	0,01%		
1001 -					9	0,02%	128.663	0,03%		
EURO IV	0		0		40	0,1%	233.599	0,0%		
UKUPNO	1.500	2,3%	5.402.280	1,2%	1.985	3,4%	6.578.627	1,4%	32,3%	21,8%
PICK-UP VOZILA (KN 8704)										
SNAGA MOTORA (kW)	2016				2017				2017 / 2016 (%)	
	BROJ VOZILA	Broj vozila udio (%)	OBRAČ. PPMV	Obrač. PPMV - udio (%)	BROJ VOZILA	Broj vozila udio (%)	OBRAČ. PPMV	Obrač. PPMV - udio (%)	BROJ VOZILA	OBRAČ. PPMV
0 - 100					7	0,01%	26.544	0,01%		
101 - 200					7	0,01%	100.137	0,02%		
201 - 300					1	0,00%	43.144	0,01%		
301 -										
UKUPNO	0		0		15	0,0%	169.825	0,0%		
SVEUKUPNO	65.321	100,0%	463.728.813	100,0%	58.350	100,0%	473.042.104	100,0%	-10,7%	2,0%

BROJ VOZILA I PROSJEČNO OBRAČUNATI PPMV

STAROST VOZILA	VRSTA VOZILA	BROJ VOZILA	OBRAČUNATI PPMV (Kn)	PROSJEČNI PPMV (Kn)	BROJ VOZILA	OBRAČUNATI PPMV (Kn)	PROSJEČNI PPMV (Kn)	PROSJ. PPMV - 2017 / 2016 (%)
NOVA	Osobna i pick-up vozila (KN 8703)	44.915	615.863.470	13.712	51.407	699.149.678	13.600	-0,8%
	Pick-up vozila (KN 8704)	0	0		115	3.067.227	26.672	
	Motocikli, ATV vozila...	2.158	10.281.139	4.764	2.317	9.389.283	4.052	-14,9%
RABLJENA	Osobna i pick-up vozila (KN 8703)	63.821	458.326.533	7.181	56.350	466.293.652	8.275	15,2%
	Pick-up vozila (KN 8704)	0	0		15	169.825	11.322	
	Motocikli, ATV vozila...	1.500	5.402.280	3.602	1.985	6.578.627	3.314	-8,0%

Izvor podataka: IS CURH (na dan 15.2.2018.)



BROJ OSOBNIH I PICK-UP VOZILA I OBRAČUNATI POSEBNI POREZ PREMA VRSTI GORIVA

VRSTA GORIVA	DIESEL	BENZIN,...	UKUPNO	DIESEL	BENZIN, ...	UKUPNO	DIESEL	BENZIN, ...	UKUPNO
STAROST VOZILA	NOVA VOZILA								
GODINA / MJESEC	2016			2017			2017 / 2016 (%)		
SIJEČANJ	1.383	740	2.123	1.176	855	2.031	-14,97%	15,54%	-4,33%
VELJAČA	1.744	886	2.630	1.680	1.279	2.959	-3,67%	44,36%	12,51%
OŽUJAK	2.549	1.781	4.330	3.504	2.154	5.658	37,47%	20,94%	30,67%
TRAVANJ	3.233	1.927	5.160	3.660	2.791	6.451	13,21%	44,84%	25,02%
SVIBANJ	3.854	2.343	6.197	4.728	4.067	8.795	22,68%	73,58%	41,92%
LIPANJ	3.738	2.588	6.326	3.716	3.107	6.823	-0,59%	20,05%	7,86%
SRPANJ	2.071	1.152	3.223	2.035	1.734	3.769	-1,74%	50,52%	16,94%
KOLOVOZ	1.570	791	2.361	1.414	1.067	2.481	-9,94%	34,89%	5,08%
RUJAN	1.747	856	2.603	1.434	1.397	2.831	-17,92%	63,20%	8,76%
LISTOPAD	1.933	976	2.909	1.845	1.798	3.643	-4,55%	84,22%	25,23%
STUDENI	1.937	956	2.893	2.052	1.539	3.591	5,94%	60,98%	24,13%
PROSINAC	2.755	1.405	4.160	1.344	1.031	2.375	-51,22%	-26,62%	-42,91%
BROJ VOZILA	28.514	16.401	44.915	28.588	22.819	51.407	0,26%	39,13%	14,45%
SIJEČANJ	26.643.950	6.066.064	32.710.014	22.896.617	6.211.579	29.108.196	-14,06%	2,40%	-11,01%
VELJAČA	32.589.089	6.613.877	39.202.966	29.716.926	11.357.176	41.074.103	-8,81%	71,72%	4,77%
OŽUJAK	43.942.191	11.715.897	55.658.088	57.982.076	16.568.792	74.550.868	31,95%	41,42%	33,94%
TRAVANJ	59.445.935	12.696.937	72.142.872	61.388.239	25.230.601	86.618.841	3,27%	98,71%	20,07%
SVIBANJ	60.381.091	15.351.541	75.732.632	74.118.513	30.553.192	104.671.705	22,75%	99,02%	38,21%
LIPANJ	55.956.279	15.487.534	71.443.813	62.193.034	22.577.950	84.770.984	11,15%	45,78%	18,65%
SRPANJ	38.981.927	8.252.051	47.233.978	43.086.684	15.444.743	58.531.427	10,53%	87,16%	23,92%
KOLOVOZ	26.743.415	8.660.686	35.404.101	26.944.046	9.257.214	36.201.260	0,75%	6,89%	2,25%
RUJAN	36.200.318	6.264.173	42.464.491	31.622.555	11.584.847	43.207.401	-12,65%	84,94%	1,75%
LISTOPAD	31.014.911	7.603.015	38.617.926	37.809.800	14.511.393	52.321.193	21,91%	90,86%	35,48%
STUDENI	31.035.243	7.739.463	38.774.706	38.758.335	12.947.121	51.705.456	24,88%	67,29%	33,35%
PROSINAC	54.405.812	12.072.071	66.477.883	27.574.854	8.813.391	36.388.245	-49,32%	-26,99%	-45,26%
OBRAČUNATI PPMV - kn	497.340.161	118.523.309	615.863.470	514.091.680	185.057.998	699.149.678	3,37%	56,14%	13,52%

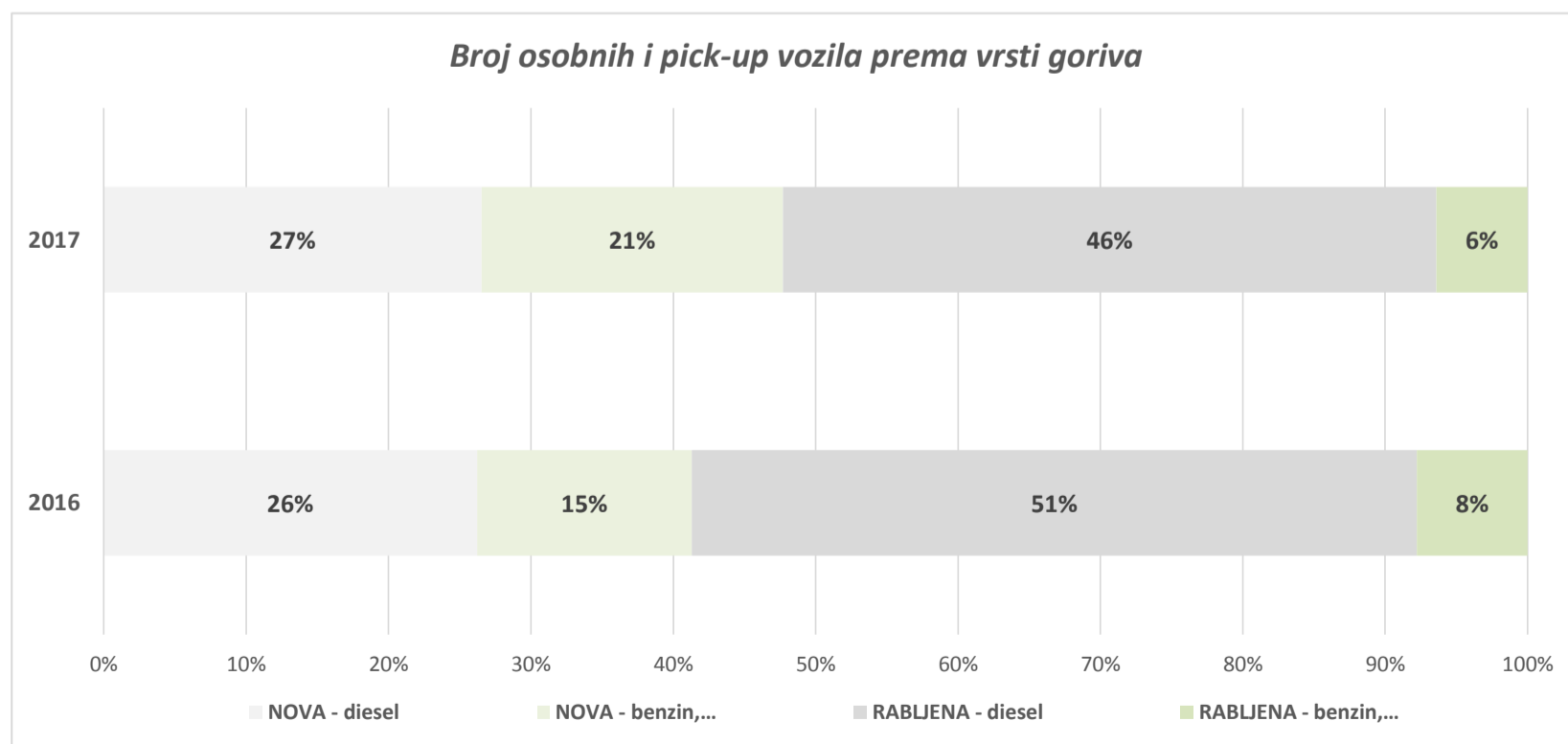
VRSTA GORIVA	DIESEL	BENZIN,...	UKUPNO	DIESEL	BENZIN, ...	UKUPNO	DIESEL	BENZIN, ...	UKUPNO
STAROST VOZILA	RABLJENA VOZILA								
GODINA / MJESEC	2016			2017			2017 / 2016 (%)		
SIJEČANJ	2.945	451	3.396	2.191	325	2.516	-25,60%	-27,94%	-25,91%
VELJAČA	3.846	517	4.363	3.470	430	3.900	-9,78%	-16,83%	-10,61%
OŽUJAK	4.129	638	4.767	4.314	591	4.905	4,48%	-7,37%	2,89%
TRAVANJ	3.777	611	4.388	3.912	555	4.467	3,57%	-9,17%	1,80%
SVIBANJ	4.147	613	4.760	4.985	782	5.767	20,21%	27,57%	21,16%
LIPANJ	4.141	554	4.695	4.020	532	4.552	-2,92%	-3,97%	-3,05%
SRPANJ	4.198	653	4.851	4.330	631	4.961	3,14%	-3,37%	2,27%
KOLOVOZ	3.870	669	4.539	3.876	595	4.471	0,16%	-11,06%	-1,50%
RUJAN	4.586	814	5.400	4.720	686	5.406	2,92%	-15,72%	0,11%
LISTOPAD	5.067	810	5.877	5.592	699	6.291	10,36%	-13,70%	7,04%
STUDENI	4.998	732	5.730	4.874	626	5.500	-2,48%	-14,48%	-4,01%
PROSINAC	9.659	1.396	11.055	3.174	440	3.614	-67,14%	-68,48%	-67,31%
BROJ VOZILA	55.363	8.458	63.821	49.458	6.892	56.350	-10,67%	-18,52%	-11,71%
SIJEČANJ	22.607.191	2.593.276	25.200.467	21.616.332	2.671.239	24.287.571	-4,38%	3,01%	-3,62%
VELJAČA	29.657.587	2.296.602	31.954.189	30.964.307	2.918.843	33.883.150	4,41%	27,09%	6,04%
OŽUJAK	30.989.087	4.365.749	35.354.836	36.944.738	4.095.964	41.040.702	19,22%	-6,18%	16,08%
TRAVANJ	28.009.588	3.456.164	31.465.753	34.484.090	3.374.228	37.858.317	23,12%	-2,37%	20,32%
SVIBANJ	31.136.113	3.774.895	34.911.007	41.375.101	5.540.101	46.915.202	32,88%	46,76%	34,39%
LIPANJ	29.903.823	3.018.157	32.921.980	32.300.321	3.267.082	35.567.403	8,01%	8,25%	8,04%
SRPANJ	30.720.542	3.467.650	34.188.191	37.317.213	4.534.790	41.852.003	21,47%	30,77%	22,42%
KOLOVOZ	26.848.438	5.191.879	32.040.317	32.904.880	4.000.849	36.905.729	22,56%	-22,94%	15,19%
RUJAN	33.265.659	4.010.670	37.276.329	40.761.752	4.000.709	44.762.461	22,53%	-0,25%	20,08%
LISTOPAD	36.898.918	4.783.552	41.682.470	49.911.668	4.589.040	54.500.708	35,27%	-4,07%	30,75%
STUDENI	35.422.908	3.553.463	38.976.371	39.471.784	3.618.864	43.090.648	11,43%	1,84%	10,56%
PROSINAC	74.440.841	7.913.782	82.354.623	23.367.688	2.262.069	25.629.757	-68,61%	-71,42%	-68,88%
OBRAČUNATI PPMV - kn	409.900.694	48.425.839	458.326.533	421.419.875	44.873.777	466.293.652	2,81%	-7,34%	1,74%

BROJ OSOBNIH I PICK-UP VOZILA I OBRAČUNATI POSEBNI POREZ PREMA VRSTI GORIVA

VRSTA GORIVA	DIESEL	BENZIN,...	UKUPNO	DIESEL	BENZIN, ...	UKUPNO	DIESEL	BENZIN, ...	UKUPNO
STAROST VOZILA	VOZILA - ukupno								
GODINA / MJESEC	2016			2017			2017 / 2016 (%)		
SIJEČANJ	4.328	1.191	5.519	3.367	1.180	4.547	-22,20%	-0,92%	-17,61%
VELJAČA	5.590	1.403	6.993	5.150	1.709	6.859	-7,87%	21,81%	-1,92%
OŽUJAK	6.678	2.419	9.097	7.818	2.745	10.563	17,07%	13,48%	16,12%
TRAVANJ	7.010	2.538	9.548	7.572	3.346	10.918	8,02%	31,84%	14,35%
SVIBANJ	8.001	2.956	10.957	9.713	4.849	14.562	21,40%	64,04%	32,90%
LIPANJ	7.879	3.142	11.021	7.736	3.639	11.375	-1,81%	15,82%	3,21%
SRPANJ	6.269	1.805	8.074	6.365	2.365	8.730	1,53%	31,02%	8,12%
KOLOVOZ	5.440	1.460	6.900	5.290	1.662	6.952	-2,76%	13,84%	0,75%
RUJAN	6.333	1.670	8.003	6.154	2.083	8.237	-2,83%	24,73%	2,92%
LISTOPAD	7.000	1.786	8.786	7.437	2.497	9.934	6,24%	39,81%	13,07%
STUDENI	6.935	1.688	8.623	6.926	2.165	9.091	-0,13%	28,26%	5,43%
PROSINAC	12.414	2.801	15.215	4.518	1.471	5.989	-63,61%	-47,48%	-60,64%
BROJ VOZILA	83.877	24.859	108.736	78.046	29.711	107.757	-6,95%	19,52%	-0,90%

SIJEČANJ	49.251.141	8.659.340	57.910.481	44.512.950	8.882.818	53.395.767	-9,62%	2,58%	-7,80%
VELJAČA	62.246.676	8.910.479	71.157.155	60.681.234	14.276.019	74.957.253	-2,51%	60,22%	5,34%
OŽUJAK	74.931.278	16.081.646	91.012.924	94.926.815	20.664.755	115.591.570	26,69%	28,50%	27,01%
TRAVANJ	87.455.523	16.153.101	103.608.625	95.872.329	28.604.829	124.477.158	9,62%	77,09%	20,14%
SVIBANJ	91.517.203	19.126.435	110.643.639	115.493.614	36.093.292	151.586.907	26,20%	88,71%	37,00%
LIPANJ	85.860.102	18.505.691	104.365.793	94.493.355	25.845.032	120.338.387	10,06%	39,66%	15,30%
SRPANJ	69.702.469	11.719.701	81.422.170	80.403.897	19.979.533	100.383.430	15,35%	70,48%	23,29%
KOLOVOZ	53.591.852	13.852.565	67.444.417	59.848.925	13.258.063	73.106.989	11,68%	-4,29%	8,40%
RUJAN	69.465.977	10.274.843	79.740.820	72.384.307	15.585.555	87.969.862	4,20%	51,69%	10,32%
LISTOPAD	67.913.830	12.386.567	80.300.396	87.721.468	19.100.434	106.821.901	29,17%	54,20%	33,03%
STUDENI	66.458.151	11.292.926	77.751.077	78.230.120	16.565.984	94.796.104	17,71%	46,69%	21,92%
PROSINAC	128.846.653	19.985.853	148.832.506	50.942.542	11.075.460	62.018.002	-60,46%	-44,58%	-58,33%
OBRAČUNATI PPMV - kn	907.240.855	166.949.148	1.074.190.003	935.511.555	229.931.776	1.165.443.330	3,12%	37,73%	8,50%

Izvor podataka: IS CURH (na dan 15.2.2018.)

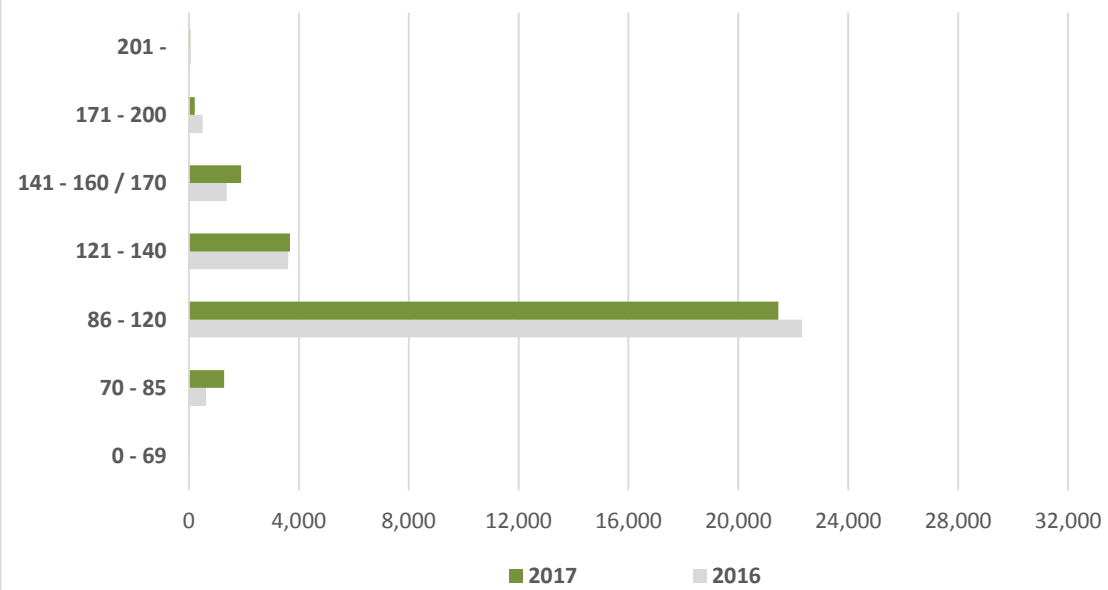


BROJ OSOBNIH I PICK-UP VOZILA (KN 8703) PREMA VRSTI GORIVA I EMISIJI CO₂

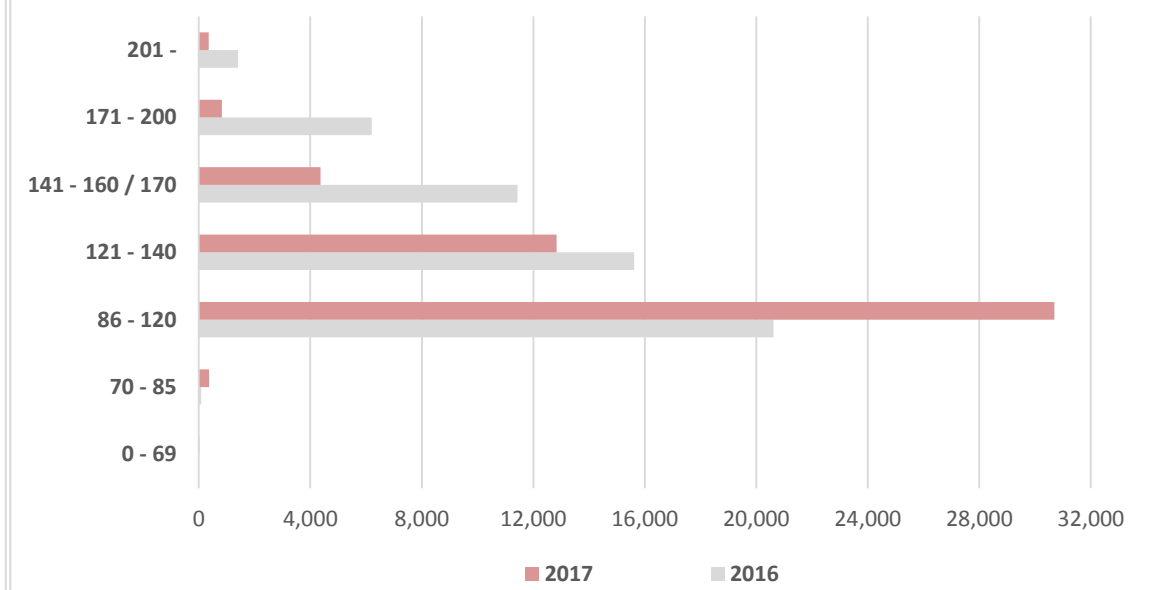
EMISIJA CO ₂	NOVA VOZILA				RABLJENA VOZILA				VOZILA - UKUPNO			
	BROJ VOZILA	Broj vozila - udio (%)	BROJ VOZILA	Broj vozila - udio (%)	BROJ VOZILA	Broj vozila - udio (%)	BROJ VOZILA	Broj vozila - udio (%)	BROJ VOZILA	Broj vozila - udio (%)	BROJ VOZILA	Broj vozila - udio (%)
	2016		2017		2016		2017		2016		2017	
0 - 69	0		2	0,00%	0		19	0,03%	0		21	0,02%
70 - 85	629	1,40%	1.281	2,49%	89	0,14%	370	0,66%	718	0,66%	1.651	1,53%
86 - 120	22.316	49,68%	21.452	41,73%	20.616	32,30%	30.692	54,47%	42.932	39,48%	52.144	48,39%
121 - 140	3.611	8,04%	3.683	7,16%	15.619	24,47%	12.829	22,77%	19.230	17,69%	16.512	15,32%
141 - 160 / 170	1.381	3,07%	1.906	3,71%	11.431	17,91%	4.361	7,74%	12.812	11,78%	6.267	5,82%
171 - 200	496	1,10%	216	0,42%	6.207	9,73%	828	1,47%	6.703	6,16%	1.044	0,97%
201 -	81	0,18%	48	0,09%	1.401	2,20%	359	0,64%	1.482	1,36%	407	0,38%
DIESEL	28.514	63,48%	28.588	55,61%	55.363	86,75%	49.458	87,77%	83.877	77,14%	78.046	72,43%
0 - 74	0		33	0,06%	0		27	0,05%	0		60	0,06%
75 - 90	274	0,61%	366	0,71%	68	0,11%	45	0,08%	342	0,31%	411	0,38%
91 - 120	11.764	26,19%	15.580	30,31%	1.673	2,62%	2.289	4,06%	13.437	12,36%	17.869	16,58%
121 - 140	3.619	8,06%	5.371	10,45%	1.896	2,97%	2.083	3,70%	5.515	5,07%	7.454	6,92%
141 - 160 / 170	647	1,44%	1.394	2,71%	1.974	3,09%	1.675	2,97%	2.621	2,41%	3.069	2,85%
171 - 200	70	0,16%	38	0,07%	2.130	3,34%	548	0,97%	2.200	2,02%	586	0,54%
201 -	27	0,06%	37	0,07%	717	1,12%	225	0,40%	744	0,68%	262	0,24%
BENZIN,UNP, DIESEL EURO VI	16.401	36,52%	22.819	44,39%	8.458	13,25%	6.892	12,23%	24.859	22,86%	29.711	27,57%
UKUPNO	44.915	100,00%	51.407	100,00%	63.821	100,00%	56.350	100,00%	108.736	100,00%	107.757	100,00%

Izvor podataka: IS CURH (na dan 15.2.2018.)

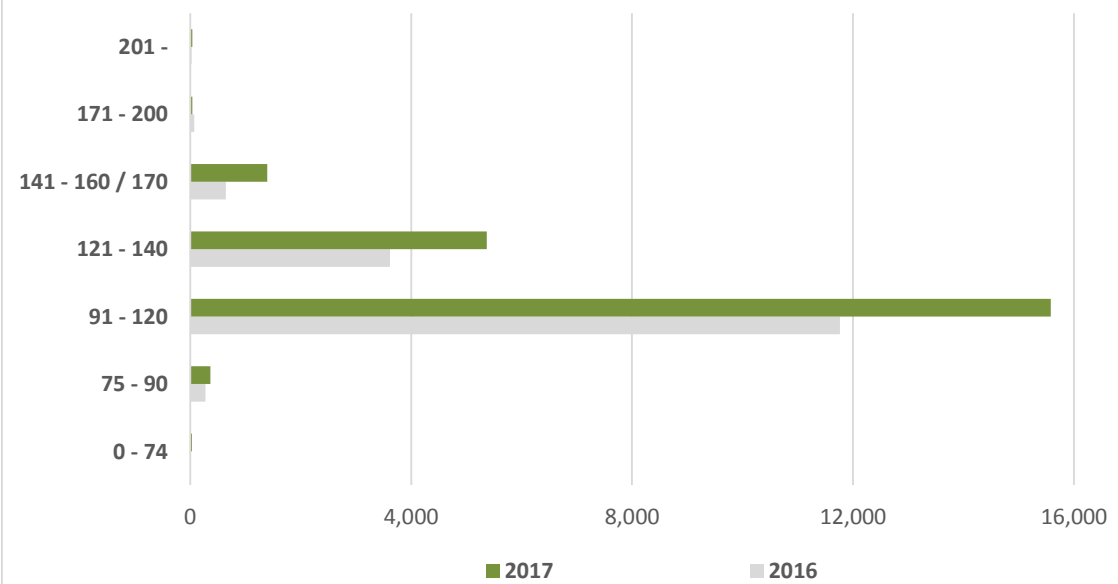
BROJ NOVIH VOZILA - diesel



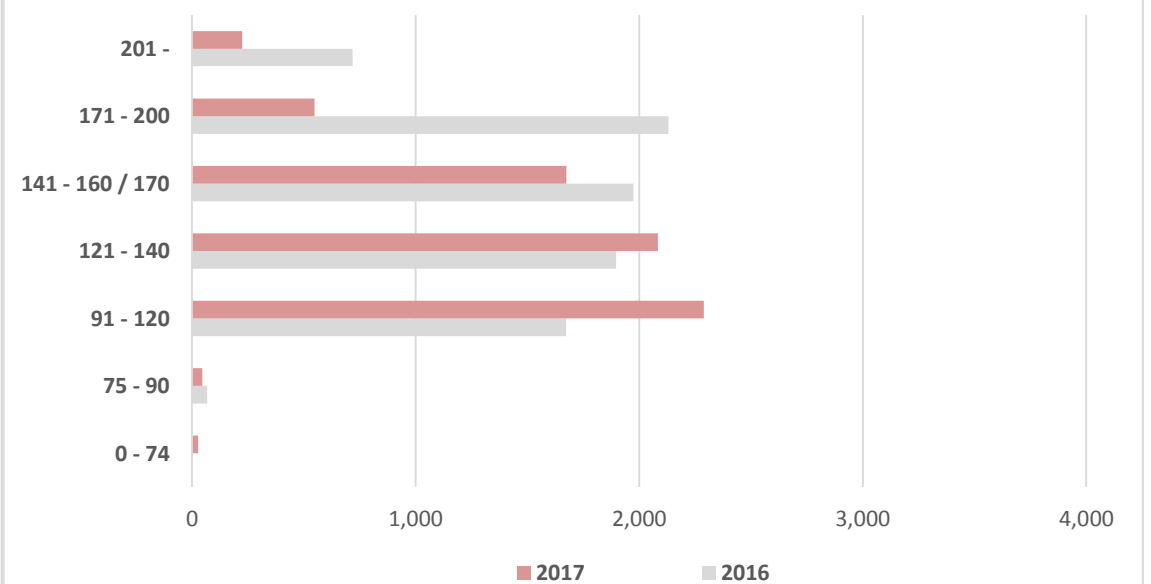
BROJ RABLJENIH VOZILA - diesel



BROJ NOVIH VOZILA - benzin,...



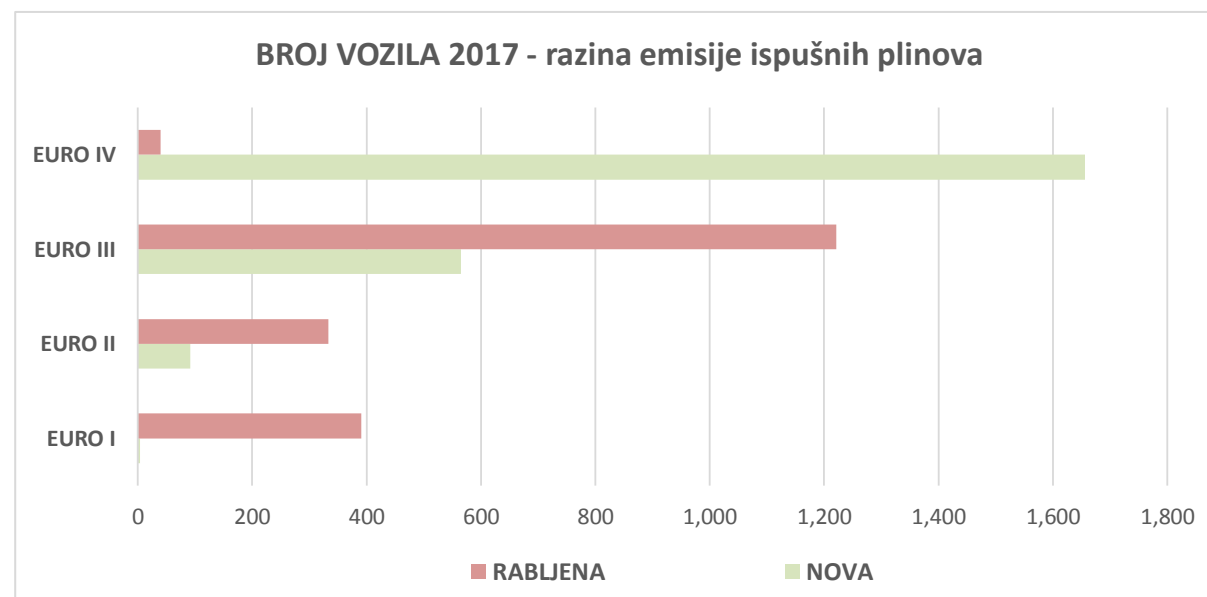
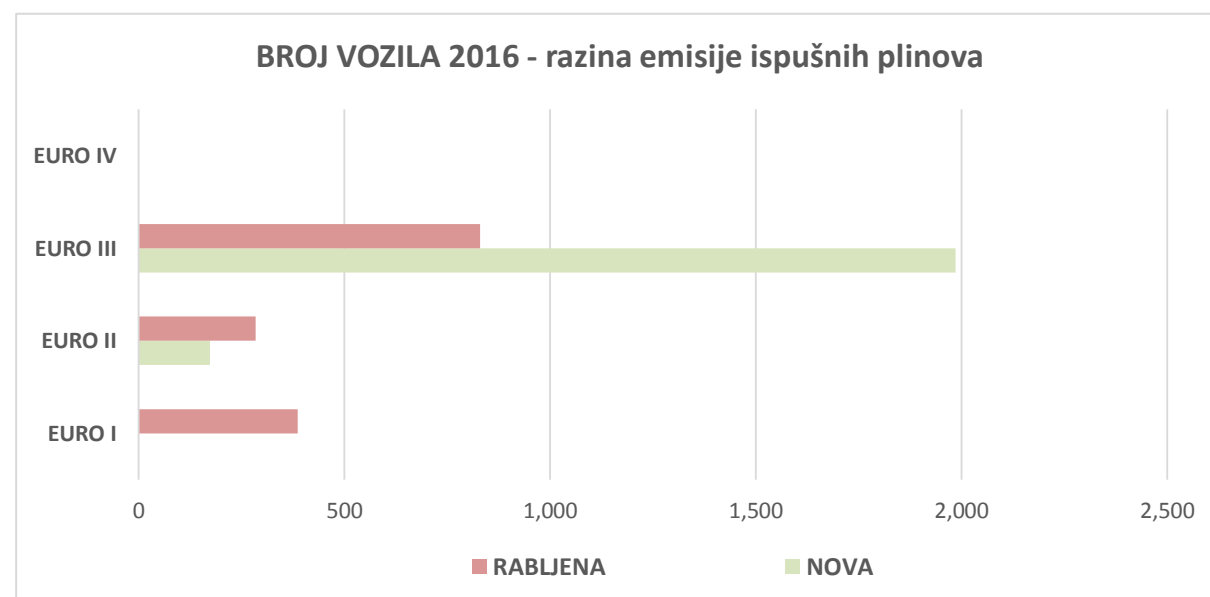
BROJ RABLJENIH VOZILA - benzin,...



BROJ MOTOCIKALA I ATV VOZILA PREMA RAZINI EMISIJE ISPUŠNIH PLINOVA

RAZINA EMISIJE ISPUŠNIH PLINOVA	NOVA VOZILA		RABLJENA VOZILA		VOZILA - UKUPNO	
	BROJ VOZILA	Broj vozila - udio (%)	BROJ VOZILA	Broj vozila - udio (%)	BROJ VOZILA	Broj vozila - udio (%)
	2016		2017		2016	
ispod 51	0		0		2	0,05%
51 - 125	0		1	0,04%	42	1,15%
126 - 400	0		2	0,09%	44	1,20%
401 - 800	0		1	0,04%	180	4,92%
801 - 1000	0		0		51	1,39%
1001 -	0		0		67	1,83%
EURO I	0		4	0,17%	386	10,55%
ispod 51	5	0,23%	0		5	0,14%
51 - 125	2	0,09%	2	0,09%	23	0,63%
126 - 400	114	5,28%	78	3,37%	185	5,06%
401 - 800	46	2,13%	8	0,35%	155	4,24%
801 - 1000	5	0,23%	2	0,09%	37	1,01%
1001 -	1	0,05%	2	0,09%	52	1,42%
EURO II	173	8,02%	92	3,97%	457	12,49%
ispod 51	3	0,14%	0		3	0,08%
51 - 125	212	9,82%	103	4,45%	253	6,92%
126 - 400	845	39,16%	209	9,02%	994	27,17%
401 - 800	460	21,32%	147	6,34%	776	21,21%
801 - 1000	155	7,18%	34	1,47%	275	7,52%
1001 -	310	14,37%	72	3,11%	514	14,05%
EURO III	1.985	91,98%	565	24,38%	2.815	76,95%
ispod 51	0		0		0	
51 - 125	0		129	5,57%	8	0,40%
126 - 400	0		585	25,25%	2	0,10%
401 - 800	0		467	20,16%	10	0,50%
801 - 1000	0		284	12,26%	11	0,55%
1001 -	0		191	8,24%	9	0,45%
EURO IV	0		1.656	71,47%	40	2,02%
UKUPNO	2.158	100,00%	2.317	100,00%	1.985	100,00%

Izvor podataka: IS CURH (na dan 15.2.2018.)



BROJ MOTORNIH VOZILA PREMA MARKI VOZILA

2016

MARKA VOZILA	BROJ VOZILA	Broj vozila - udio (%)	MARKA VOZILA	BROJ VOZILA	Broj vozila - udio (%)
	NOVA			RABLJENA	
ADRIA			ADRIA	4	0,01%
AIXAM MEGA			AIXAM MEGA		
ALFA ROMEO	96	0,20%	ALFA ROMEO	1.375	2,10%
ASTON MARTIN			ASTON MARTIN	1	0,00%
AUDI	1.526	3,24%	AUDI	4.929	7,55%
AUSTIN ROVER			AUSTIN ROVER	6	0,01%
BENTLEY			BENTLEY		
BMW	1.293	2,75%	BMW	5.133	7,86%
BUICK			BUICK		
CADILLAC			CADILLAC	2	0,00%
CHEVROLET	1	0,00%	CHEVROLET	115	0,18%
CHRYSLER	2	0,00%	CHRYSLER	67	0,10%
CITROEN	1.738	3,69%	CITROEN	2.012	3,08%
CORVETTE			CORVETTE		
DACIA	2.025	4,30%	DACIA	158	0,24%
DAEWOO			DAEWOO	23	0,04%
DAIHATSU			DAIHATSU	13	0,02%
DODGE			DODGE	18	0,03%
FERRARI			FERRARI	2	0,00%
FIAT	925	1,97%	FIAT	2.399	3,67%
FORD	2.904	6,17%	FORD	4.291	6,57%
HONDA	179	0,38%	HONDA	517	0,79%
HYMER			HYMER	4	0,01%
HYUNDAI	2.286	4,86%	HYUNDAI	483	0,74%
INFINITI	53	0,11%	INFINITI	4	0,01%
ISUZU			ISUZU	2	0,00%
IVECO			IVECO	1	0,00%
JAGUAR	30	0,06%	JAGUAR	48	0,07%
JEEP	100	0,21%	JEEP	75	0,11%
KIA	1.473	3,13%	KIA	215	0,33%
LADA	4	0,01%	LADA		
LANCIA	28	0,06%	LANCIA	219	0,34%
LAND ROVER	60	0,13%	LAND ROVER	93	0,14%
LEXUS	8	0,02%	LEXUS	15	0,02%
LINCOLN			LINCOLN		
LOTUS			LOTUS	1	0,00%
MASERATI	2	0,00%	MASERATI	3	0,00%

2017

MARKA VOZILA	BROJ VOZILA	Broj vozila - udio (%)	MARKA VOZILA	BROJ VOZILA	Broj vozila - udio (%)
	NOVA			RABLJENA	
ADRIA	2	0,00%	ADRIA	2	0,00%
AIXAM MEGA	5	0,01%	AIXAM MEGA		
ALFA ROMEO	142	0,26%	ALFA ROMEO	452	0,77%
ASTON MARTIN			ASTON MARTIN	3	0,01%
AUDI	1.781	3,31%	AUDI	3.875	6,64%
AUSTIN ROVER			AUSTIN ROVER	2	0,00%
BENTLEY			BENTLEY	2	0,00%
BMW	1.287	2,39%	BMW	4.439	7,61%
BUICK			BUICK	2	0,00%
CADILLAC			CADILLAC	3	0,01%
CHEVROLET			CHEVROLET	83	0,14%
CHRYSLER	2	0,00%	CHRYSLER	9	0,02%
CITROEN	1.822	3,38%	CITROEN	2.152	3,69%
CORVETTE			CORVETTE	1	0,00%
DACIA	2.239	4,16%	DACIA	156	0,27%
DAEWOO			DAEWOO	4	0,01%
DAIHATSU			DAIHATSU	17	0,03%
DODGE			DODGE	4	0,01%
FERRARI			FERRARI	1	0,00%
FIAT	1.447	2,69%	FIAT	1.869	3,20%
FORD	3.623	6,73%	FORD	4.678	8,02%
HONDA	218	0,40%	HONDA	470	0,81%
HYMER			HYMER		
HYUNDAI	2.459	4,57%	HYUNDAI	636	1,09%
INFINITI	31	0,06%	INFINITI	9	0,02%
ISUZU			ISUZU		
IVECO			IVECO	3	0,01%
JAGUAR	47	0,09%	JAGUAR	28	0,05%
JEEP	113	0,21%	JEEP	25	0,04%
KIA	1.452	2,70%	KIA	296	0,51%
LADA	1	0,00%	LADA	2	0,00%
LANCIA	134	0,25%	LANCIA	140	0,24%
LAND ROVER	86	0,16%	LAND ROVER	50	0,09%
LEXUS	6	0,01%	LEXUS	11	0,02%
LINCOLN			LINCOLN	1	0,00%
LOTUS			LOTUS	1	0,00%
MASERATI	1	0,00%	MASERATI	3	0,01%

BROJ MOTORNIH VOZILA PREMA MARKI VOZILA

2016

MARKA VOZILA	BROJ VOZILA	Broj vozila - udio (%)	MARKA VOZILA	BROJ VOZILA	Broj vozila - udio (%)
	NOVA			RABLJENA	
MAYBACH			MAYBACH		
MAZDA	1.235	2,62%	MAZDA	1.011	1,55%
MERCEDES-BENZ	1.304	2,77%	MERCEDES-BENZ	6.356	9,73%
MERCURY			MERCURY		
MG			MG	4	0,01%
MINI	191	0,41%	MINI	321	0,49%
MITSUBISHI	220	0,47%	MITSUBISHI	197	0,30%
MORGAN	1	0,00%	MORGAN		
Nespecificirano (A)	3	0,01%	Nespecificirano (A)	11	0,02%
NISSAN	977	2,08%	NISSAN	556	0,85%
OLDSMOBILE			OLDSMOBILE	3	0,00%
OPEL	4.446	9,44%	OPEL	4.229	6,47%
PEUGEOT	2.095	4,45%	PEUGEOT	3.602	5,51%
PLYMOUTH			PLYMOUTH	2	0,00%
PONTIAC			PONTIAC	3	0,00%
PORSCHE	49	0,10%	PORSCHE	34	0,05%
PUCH			PUCH	1	0,00%
RENAULT	3.944	8,38%	RENAULT	6.642	10,17%
ROLLS-ROYCE			ROLLS-ROYCE	1	0,00%
ROVER			ROVER	24	0,04%
SAAB	1	0,00%	SAAB	38	0,06%
SEAT	1.025	2,18%	SEAT	698	1,07%
SHUANGHUAN			SHUANGHUAN		
SINCA			SINCA		
SMART	160	0,34%	SMART	1.349	2,07%
SSANGYONG			SSANGYONG	9	0,01%
SUBARU	69	0,15%	SUBARU	39	0,06%
SUZUKI	2.430	5,16%	SUZUKI	203	0,31%
ŠKODA	3.582	7,61%	ŠKODA	950	1,45%
TATA			TATA	1	0,00%
TOYOTA	1.810	3,85%	TOYOTA	785	1,20%
VOLKSWAGEN	6.355	13,50%	VOLKSWAGEN	13.857	21,21%
VOLVO	285	0,61%	VOLVO	666	1,02%
ZASTAVA			ZASTAVA		
OSOBNIA I PICK-UP VOZILA (KN 8703)	44.915	95,42%	OSOBNIA I PICK-UP VOZILA (KN 8703)	63.821	97,70%

2017

MARKA VOZILA	BROJ VOZILA	Broj vozila - udio (%)	MARKA VOZILA	BROJ VOZILA	Broj vozila - udio (%)
	NOVA			RABLJENA	
MAYBACH			MAYBACH	2	0,00%
MAZDA	1.348	2,50%	MAZDA	963	1,65%
MERCEDES-BENZ	1.294		MERCEDES-BENZ	3.863	6,62%
MERCURY			MERCURY	3	0,01%
MG			MG	3	0,01%
MINI	178	0,33%	MINI	356	0,61%
MITSUBISHI	99	0,18%	MITSUBISHI	128	0,22%
MORGAN			MORGAN		
Nespecificirano (A)	1	0,00%	Nespecificirano (A)	9	0,02%
NISSAN	845	1,57%	NISSAN	594	1,02%
OLDSMOBILE			OLDSMOBILE	3	0,01%
OPEL	5.102	9,48%	OPEL	3.863	6,62%
PEUGEOT	2.023	3,76%	PEUGEOT	3.708	6,35%
PLYMOUTH			PLYMOUTH		
PONTIAC			PONTIAC	2	0,00%
PORSCHE	48	0,09%	PORSCHE	40	0,07%
PUCH			PUCH		
RENAULT	4.714	8,76%	RENAULT	6.739	11,55%
ROLLS-ROYCE			ROLLS-ROYCE	1	0,00%
ROVER			ROVER	7	0,01%
SAAB			SAAB	13	0,02%
SEAT	1.230	2,28%	SEAT	705	1,21%
SHUANGHUAN			SHUANGHUAN	1	0,00%
SINCA			SINCA	1	0,00%
SMART	130	0,24%	SMART	1.507	2,58%
SSANGYONG	1	0,00%	SSANGYONG	1	0,00%
SUBARU	45	0,08%	SUBARU	36	0,06%
SUZUKI	3.100	5,76%	SUZUKI	197	0,34%
ŠKODA	4.725	8,78%	ŠKODA	1.219	2,09%
TATA			TATA	1	0,00%
TOYOTA	1.808	3,36%	TOYOTA	730	1,25%
VOLKSWAGEN	7.568	14,06%	VOLKSWAGEN	11.557	19,81%
VOLVO	250	0,46%	VOLVO	664	1,14%
ZASTAVA			ZASTAVA	5	0,01%
OSOBNIA I PICK-UP VOZILA (KN 8703)	51.407	95,48%	OSOBNIA I PICK-UP VOZILA (KN 8703)	56.350	96,57%

BROJ MOTORNIH VOZILA PREMA MARKI VOZILA

2016

MARKA VOZILA	BROJ VOZILA	Broj vozila - udio (%)	MARKA VOZILA	BROJ VOZILA	Broj vozila - udio (%)
	NOVA			RABLJENA	
ACCESS MOTOR	11	0,02%	ACCESS MOTOR	1	0,00%
ADLY	8	0,02%	ADLY		
AEON	5	0,01%	AEON		
AIXAM-MEGA			AIXAM-MEGA	1	0,00%
APRILIA	26	0,06%	APRILIA	32	0,05%
BAROSSA			BAROSSA	1	0,00%
BIMOTA	1	0,00%	BIMOTA		
BMW	139	0,30%	BMW	190	0,29%
BUELL			BUELL		
CAN-AM	10	0,02%	CAN-AM	5	0,01%
CC	1	0,00%	CC	2	0,00%
CFMOTO	22	0,05%	CFMOTO	1	0,00%
DAELIM			DAELIM	4	0,01%
DERBI	8	0,02%	DERBI	1	0,00%
DRAG			DRAG		
DUCATI	35	0,07%	DUCATI	54	0,08%
EGLMOTOR			EGLMOTOR		
EMCO			EMCO	1	0,00%
GILERA	2	0,00%	GILERA	8	0,01%
GOES	1	0,00%	GOES		
HARLEY DAVIDSON	63	0,13%	HARLEY DAVIDSON	43	0,07%
HONDA	161	0,34%	HONDA	291	0,45%
HUSABERG			HUSABERG	4	0,01%
HUSQVARNA	4	0,01%	HUSQVARNA	2	0,00%
JINGLING	5	0,01%	JINGLING	3	0,00%
KAWASAKI	101	0,21%	KAWASAKI	138	0,21%
KEEWAY	4	0,01%	KEEWAY	3	0,00%
KTM	49	0,10%	KTM	30	0,05%
KYMCO	139	0,30%	KYMCO	40	0,06%
LINHAI	93	0,20%	LINHAI	5	0,01%
MALAGUTI			MALAGUTI	5	0,01%
MASH			MASH		
MOTO GUZZI	3	0,01%	MOTO GUZZI	13	0,02%
MV AGUSTA	5	0,01%	MV AGUSTA	3	0,00%
Nespecificirano (M)	13	0,03%	Nespecificirano (M)	44	0,07%
OTR	2	0,00%	OTR		
PEUGEOT			PEUGEOT		

2017

MARKA VOZILA	BROJ VOZILA	Broj vozila - udio (%)	MARKA VOZILA	BROJ VOZILA	Broj vozila - udio (%)
	NOVA			RABLJENA	
ACCESS MOTOR			ACCESS MOTOR		
ADLY	2	0,00%	ADLY	6	0,01%
AEON	4	0,01%	AEON	2	0,00%
AIXAM-MEGA			AIXAM-MEGA	5	0,01%
APRILIA	4	0,01%	APRILIA	54	0,09%
BAROSSA			BAROSSA		
BIMOTA			BIMOTA	1	0,00%
BMW	190	0,35%	BMW	244	0,42%
BUELL			BUELL	1	0,00%
CAN-AM			CAN-AM	4	0,01%
CC			CC	1	0,00%
CFMOTO	12	0,02%	CFMOTO	2	0,00%
DAELIM			DAELIM	6	0,01%
DERBI	2	0,00%	DERBI	2	0,00%
DRAG	1	0,00%	DRAG		
DUCATI	40	0,07%	DUCATI	69	0,12%
EGLMOTOR			EGLMOTOR	1	0,00%
EMCO			EMCO		
GILERA	1	0,00%	GILERA	14	0,02%
GOES			GOES	2	0,00%
HARLEY DAVIDSON	74	0,14%	HARLEY DAVIDSON	50	0,09%
HONDA	181	0,34%	HONDA	373	0,64%
HUSABERG			HUSABERG	2	0,00%
HUSQVARNA	2	0,00%	HUSQVARNA	3	0,01%
JINGLING			JINGLING	3	0,01%
KAWASAKI	88	0,16%	KAWASAKI	181	0,31%
KEEWAY	3	0,01%	KEEWAY	2	0,00%
KTM	52	0,10%	KTM	31	0,05%
KYMCO	128	0,24%	KYMCO	53	0,09%
LINHAI	38	0,07%	LINHAI	3	0,01%
MALAGUTI			MALAGUTI	8	0,01%
MASH	3	0,01%	MASH	2	0,00%
MOTO GUZZI	1	0,00%	MOTO GUZZI	7	0,01%
MV AGUSTA	3	0,01%	MV AGUSTA	8	0,01%
Nespecificirano (M)	25	0,05%	Nespecificirano (M)	44	0,08%
OTR	1	0,00%	OTR		
PEUGEOT			PEUGEOT	1	0,00%

BROJ MOTORNIH VOZILA PREMA MARKI VOZILA

2016

MARKA VOZILA	BROJ VOZILA	Broj vozila - udio (%)	MARKA VOZILA	BROJ VOZILA	Broj vozila - udio (%)
	NOVA			RABLJENA	
PIAGGIO	390		PIAGGIO	95	
POLARIS	2	0,00%	POLARIS	2	0,00%
PUCH			PUCH	1	0,00%
SHERCO	9	0,02%	SHERCO		
SHINERAY	32	0,07%	SHINERAY	2	0,00%
SUZUKI	54	0,11%	SUZUKI	256	0,39%
SYM	11	0,02%	SYM	2	0,00%
TGB	3	0,01%	TGB		
TOMOS			TOMOS		
TRIUMPH	8	0,02%	TRIUMPH	10	0,02%
VESPA	17	0,04%	VESPA	6	0,01%
YAMAHA	721	1,53%	YAMAHA	201	0,31%
MOTOCIKLI, ATV VOZILA	2.158	4,58%	MOTOCIKLI, ATV VOZILA	1.500	2,30%
DODGE			DODGE		
FORD			FORD		
ISUZU			ISUZU		
MAHINDRA			MAHINDRA		
MAZDA			MAZDA		
MITSUBISHI			MITSUBISHI		
NISSAN			NISSAN		
TOYOTA			TOYOTA		
VOLKSWAGEN			VOLKSWAGEN		
PICK-UP VOZILA (KN 8704)	0		PICK-UP VOZILA (KN 8704)	0	
UKUPNO	47.073	100,00%	UKUPNO	65.321	100,00%

2017

MARKA VOZILA	BROJ VOZILA	Broj vozila - udio (%)	MARKA VOZILA	BROJ VOZILA	Broj vozila - udio (%)
	NOVA			RABLJENA	
PIAGGIO	493	0,92%	PIAGGIO	103	0,18%
POLARIS	1	0,00%	POLARIS	3	0,01%
PUCH			PUCH		
SHERCO	7	0,01%	SHERCO		
SHINERAY	16	0,03%	SHINERAY	2	0,00%
SUZUKI	105	0,20%	SUZUKI	347	0,59%
SYM	15	0,03%	SYM	6	0,01%
TGB			TGB	3	0,01%
TOMOS	1	0,00%	TOMOS	1	0,00%
TRIUMPH	10	0,02%	TRIUMPH	23	0,04%
VESPA	7	0,01%	VESPA	2	0,00%
YAMAHA	807	1,50%	YAMAHA	310	0,53%
MOTOCIKLI, ATV VOZILA	2.317	4,30%	MOTOCIKLI, ATV VOZILA	1.985	3,40%
DODGE			DODGE	1	0,00%
FORD	4	0,01%	FORD	3	0,01%
ISUZU			ISUZU	1	0,00%
MAHINDRA			MAHINDRA	1	0,00%
MAZDA			MAZDA	3	0,01%
MITSUBISHI	29	0,05%	MITSUBISHI	1	0,00%
NISSAN	15	0,03%	NISSAN		
TOYOTA	63	0,12%	TOYOTA	1	0,00%
VOLKSWAGEN	4	0,01%	VOLKSWAGEN	4	0,01%
PICK-UP VOZILA (KN 8704)	115	0,21%	PICK-UP VOZILA (KN 8704)	15	0,03%
UKUPNO	53.839	100,00%	UKUPNO	58.350	100,00%

Izvor podataka: IS CURH (na dan 15.2.2018.)

TOP 20 PREMA MARKI VOZILA I VRSTI GORIVA

NOVA VOZILA	2016				2017						
	MARKA VOZILA	BROJ VOZILA	Broj vozila - udio (%)	MARKA VOZILA	BROJ VOZILA	Broj vozila - udio (%)	MARKA VOZILA	BROJ VOZILA	Broj vozila - udio (%)		
		DIESEL			BENZIN			DIESEL		BENZIN	
VOLKSWAGEN	4.738	16,62%	SUZUKI	2.154	13,13%	VOLKSWAGEN	4.706	16,46%	SUZUKI	2.928	12,83%
RENAULT	2.670	9,36%	OPEL	1.890	11,52%	RENAULT	3.128	10,94%	VOLKSWAGEN	2.862	12,54%
OPEL	2.556	8,96%	FORD	1.639	9,99%	ŠKODA	2.814	9,84%	OPEL	2.496	10,94%
ŠKODA	2.516	8,82%	VOLKSWAGEN	1.617	9,86%	OPEL	2.606	9,12%	ŠKODA	1.911	8,37%
PEUGEOT	1.710	6,00%	RENAULT	1.274	7,77%	FORD	2.056	7,19%	RENAULT	1.586	6,95%
KIA	1.444	5,06%	TOYOTA	1.259	7,68%	PEUGEOT	1.611	5,64%	FORD	1.567	6,87%
CITROEN	1.409	4,94%	HYUNDAI	1.188	7,24%	AUDI	1.510	5,28%	HYUNDAI	1.498	6,56%
DACIA	1.395	4,89%	ŠKODA	1.066	6,50%	MERCEDES-BENZ	1.269	4,44%	TOYOTA	1.451	6,36%
AUDI	1.341	4,70%	DACIA	630	3,84%	DACIA	1.267	4,43%	DACIA	972	4,26%
BMW	1.277	4,48%	FIAT	628	3,83%	BMW	1.233	4,31%	FIAT	956	4,19%
MERCEDES-BENZ	1.273	4,46%	MAZDA	587	3,58%	CITROEN	1.154	4,04%	MAZDA	757	3,32%
FORD	1.265	4,44%	NISSAN	437	2,66%	HYUNDAI	961	3,36%	KIA	739	3,24%
HYUNDAI	1.098	3,85%	SEAT	430	2,62%	KIA	713	2,49%	CITROEN	668	2,93%
MAZDA	648	2,27%	PEUGEOT	385	2,35%	SEAT	624	2,18%	SEAT	606	2,66%
SEAT	595	2,09%	CITROEN	329	2,01%	MAZDA	591	2,07%	PEUGEOT	412	1,81%
TOYOTA	551	1,93%	AUDI	185	1,13%	NISSAN	503	1,76%	NISSAN	342	1,50%
NISSAN	540	1,89%	MITSUBISHI	165	1,01%	FIAT	491	1,72%	AUDI	271	1,19%
FIAT	297	1,04%	SMART	137	0,84%	TOYOTA	357	1,25%	HONDA	171	0,75%
VOLVO	282	0,99%	MINI	116	0,71%	VOLVO	241	0,84%	LANCIA	134	0,59%
SUZUKI	276	0,97%	HONDA	94	0,57%	SUZUKI	172	0,60%	SMART	127	0,56%
TOP 20	27.881	97,78%	TOP 20	16.210	98,84%	TOP 20	28.007	97,97%	TOP 20	22.454	98,40%
OSTALO	633	2,22%	OSTALO	191	1,16%	OSTALO	581	2,03%	OSTALO	365	1,60%
UKUPNO	28.514	100,00%	UKUPNO	16.401	100,00%	UKUPNO	28.588	100,00%	UKUPNO	22.819	100,00%

Izvor podataka: IS CURH (na dan 15.2.2018.)

TOP 20 PREMA MARKI VOZILA I VRSTI GORIVA

RABLJENA VOZILA	2016					2017					
	MARKA VOZILA	BROJ VOZILA	Broj vozila - udio (%)	MARKA VOZILA	BROJ VOZILA	Broj vozila - udio (%)	MARKA VOZILA	BROJ VOZILA	Broj vozila - udio (%)		
		DIESEL			BENZIN			DIESEL		BENZIN	
VOLKSWAGEN	12.967	23,42%	SMART	946	11,18%	VOLKSWAGEN	10.915	22,07%	SMART	1.019	14,79%
RENAULT	5.963	10,77%	VOLKSWAGEN	890	10,52%	RENAULT	6.134	12,40%	VOLKSWAGEN	642	9,32%
MERCEDES-BENZ	5.654	10,21%	OPEL	796	9,41%	FORD	4.329	8,75%	OPEL	640	9,29%
BMW	4.775	8,62%	FIAT	716	8,47%	BMW	4.262	8,62%	RENAULT	605	8,78%
AUDI	4.705	8,50%	MERCEDES-BENZ	702	8,30%	AUDI	3.756	7,59%	FIAT	596	8,65%
FORD	3.876	7,00%	RENAULT	679	8,03%	MERCEDES-BENZ	3.543	7,16%	PEUGEOT	368	5,34%
OPEL	3.433	6,20%	PEUGEOT	482	5,70%	PEUGEOT	3.340	6,75%	TOYOTA	351	5,09%
PEUGEOT	3.120	5,64%	FORD	415	4,91%	OPEL	3.223	6,52%	FORD	349	5,06%
CITROEN	1.770	3,20%	BMW	358	4,23%	CITROEN	1.931	3,90%	MERCEDES-BENZ	320	4,64%
FIAT	1.683	3,04%	TOYOTA	323	3,82%	FIAT	1.273	2,57%	CITROEN	221	3,21%
ALFA ROMEO	1.266	2,29%	CITROEN	242	2,86%	ŠKODA	1.117	2,26%	HONDA	215	3,12%
MAZDA	892	1,61%	AUDI	224	2,65%	MAZDA	874	1,77%	BMW	177	2,57%
ŠKODA	850	1,54%	HONDA	206	2,44%	VOLVO	643	1,30%	MINI	124	1,80%
VOLVO	620	1,12%	HYUNDAI	140	1,66%	SEAT	618	1,25%	AUDI	119	1,73%
SEAT	600	1,08%	MINI	134	1,58%	HYUNDAI	518	1,05%	HYUNDAI	118	1,71%
TOYOTA	462	0,83%	NISSAN	130	1,54%	SMART	488	0,99%	NISSAN	111	1,61%
NISSAN	426	0,77%	MAZDA	119	1,41%	NISSAN	483	0,98%	SUZUKI	109	1,58%
SMART	403	0,73%	ALFA ROMEO	109	1,29%	ALFA ROMEO	402	0,81%	ŠKODA	102	1,48%
HYUNDAI	343	0,62%	ŠKODA	100	1,18%	TOYOTA	379	0,77%	KIA	99	1,44%
HONDA	311	0,56%	MITSUBISHI	98	1,16%	HONDA	255	0,52%	MAZDA	89	1,29%
TOP 20	54.119	97,75%	TOP 20	7.809	92,33%	TOP 20	48.483	98,03%	TOP 20	6.374	92,48%
OSTALO	1.244	2,25%	OSTALO	649	7,67%	OSTALO	975	1,97%	OSTALO	518	7,52%
UKUPNO	55.363	100,00%	UKUPNO	8.458	100,00%	UKUPNO	49.458	100,00%	UKUPNO	6.892	100,00%

PROSJEČNA STAROST RABLJENIH VOZILA

STAROST VOZILA	OSOBNIA I PICK-UP VOZILA (KN 8703)				MOTOCIKLI I ATV VOZILA			
	2016	2017			2016	2017		
	POREZNA RJEŠENJA		REG.TRG.MV	UKUPNO	POREZNA RJEŠENJA		REG.TRG.MV	UKUPNO
do 10 godina	36.080	42.621	1.659	44.280	798	1.243	2	1.245
10 - 20 godina	27.410	11.691	153	11.844	547	598	0	598
preko 20 godina	331	226	0	226	155	142	0	142
UKUPNO	63.821	54.538	1.812	56.350	1.500	1.983	2	1.985

GODINA PROIZVODNJE													
TOP 10 GODINA PROIZVODNJE	2012	6.186	2013	6.632	2013	386	2008	129	2009	171	2016	1	UKUPNO
	2011	5.708	2012	6.040	2012	319	2006	115	2008	164	2013	1	
	2005	5.563	2014	5.291	2014	286	2010	104	2007	156			
	2004	5.370	2011	4.828	2015	178	2009	102	2010	151			
	2006	5.161	2010	4.276	2011	98	2007	101	2006	139			
	2007	4.842	2008	3.887	2016	97	2005	89	2012	136			
	2013	4.430	2009	3.755	2010	68	2012	88	2011	127			
	2003	4.066	2007	3.670	2006	67	2011	86	2013	109			
	2008	4.048	2006	2.982	2008	65	2004	79	2005	97			
	2010	3.651	2005	2.780	2009	65	2013	67	2014	94			
	49.025		44.141		1.629		960		1.344		2	1.346	
OSTALO	14.796		10.397		183		540		639		0	639	
UKUPNO	63.821		54.538		1.812		1.500		1.983		2	1.985	

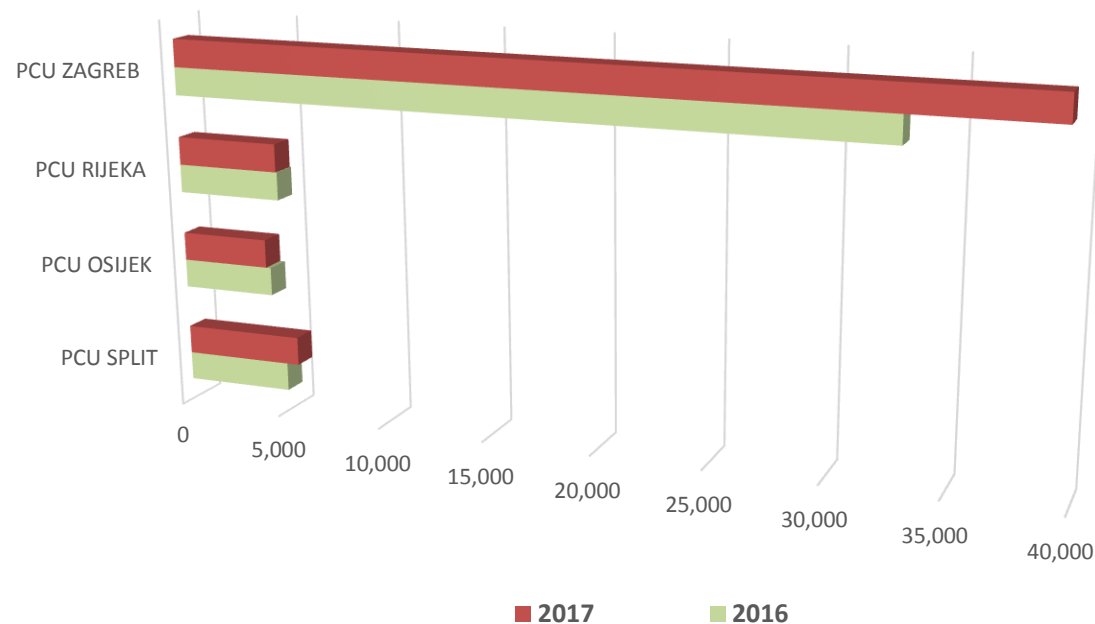
PROSJEČNA STAROST VOZILA								
TOP 10 GODINA PROIZVODNJE	8,0	6,8	4,5	7,2	7,6	7,7	2,5	10,0
OSTALO	9,9	9,5	9,4		15,7	15,0	0,0	
UKUPNO	8,5	7,3	5,0		10,5	10,0	2,5	

BROJ MOTORNIH VOZILA PO CARINSKIM UREDIMA

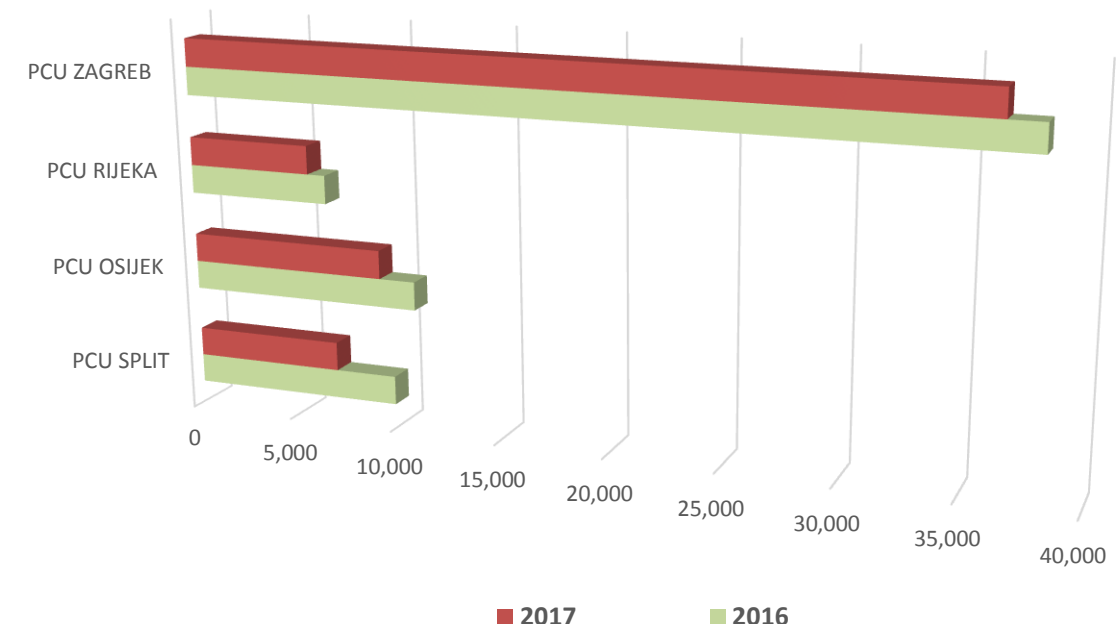
STAROST VOZILA:	2016						2017						% promjene		
	NOVA VOZILA		RABLJENA VOZILA		VOZILA - UKUPNO		NOVA VOZILA		RABLJENA VOZILA		VOZILA - UKUPNO				
	Broj vozila	Broj vozila - udio (%)	Broj vozila	Broj vozila - udio (%)	Broj vozila	Broj vozila - udio (%)	Broj vozila	Broj vozila - udio (%)	Broj vozila	Broj vozila - udio (%)	Broj vozila	Broj vozila - udio (%)	N	R	UK.
CARINSKI URED															
CARINSKI URED ZAGREB I	13.728	29,16%	9.762	14,94%	23.490	20,90%	16.048	29,81%	9.660	16,56%	25.708	22,91%	16,9	-1,0	9,4
CARINSKI URED ZAGREB II	14.130	30,02%	13.019	19,93%	27.149	24,16%	17.866	33,18%	13.457	23,06%	31.323	27,92%	26,4	3,4	15,4
CARINSKI URED KRAPINA	611	1,30%	1.767	2,71%	2.378	2,12%	508	0,94%	1.288	2,21%	1.796	1,60%	-16,9	-27,1	-24,5
CARINSKI URED VARAŽDIN	2.477	5,26%	5.056	7,74%	7.533	6,70%	3.112	5,78%	4.998	8,57%	8.110	7,23%	25,6	-1,1	7,7
CARINSKI URED KOPRIVNICA	489	1,04%	3.583	5,49%	4.072	3,62%	403	0,75%	2.788	4,78%	3.191	2,84%	-17,6	-22,2	-21,6
CARINSKI URED SISAK	793	1,68%	3.432	5,25%	4.225	3,76%	799	1,48%	2.681	4,59%	3.480	3,10%	0,8	-21,9	-17,6
CARINSKI URED KARLOVAC	581	1,23%	1.329	2,03%	1.910	1,70%	562	1,04%	1.488	2,55%	2.050	1,83%	-3,3	12,0	7,3
PODRUČNI CARINSKI URED ZAGREB	32.809	69,70%	37.948	58,09%	70.757	62,95%	39.298	72,99%	36.360	62,31%	75.658	67,44%	19,8	-4,2	6,9
CARINSKI URED RIJEKA	3.084	6,55%	3.325	5,09%	6.409	5,70%	3.116	5,79%	2.921	5,01%	6.037	5,38%	1,0	-12,2	-5,8
CARINSKI URED PULA - POLA	1.822	3,87%	2.958	4,53%	4.780	4,25%	1.730	3,21%	2.649	4,54%	4.379	3,90%	-5,0	-10,4	-8,4
CARINSKI URED GOSPIĆ			400	0,61%	400	0,36%			269	0,46%	269	0,24%		-32,8	-32,8
PODRUČNI CARINSKI URED RIJEKA	4.906	10,42%	6.683	10,23%	11.589	10,31%	4.846	9,00%	5.839	10,01%	10.685	9,52%	-1,2	-12,6	-7,8
CARINSKI URED OSIJEK	3.795	8,06%	6.955	10,65%	10.750	9,56%	3.376	6,27%	5.702	9,77%	9.078	8,09%	-11,0	-18,0	-15,6
CARINSKI URED SLAVONSKI BROD	532	1,13%	3.108	4,76%	3.640	3,24%	519	0,96%	2.414	4,14%	2.933	2,61%	-2,4	-22,3	-19,4
CARINSKI URED VIROVITICA	42	0,09%	821	1,26%	863	0,77%	29	0,05%	544	0,93%	573	0,51%	-31,0	-33,7	-33,6
CARINSKI URED VUKOVAR					0		212	0,39%	546	0,94%	758	0,68%			
PODRUČNI CARINSKI URED OSIJEK	4.369	9,28%	10.884	16,66%	15.253	13,57%	4.136	7,68%	9.206	15,78%	13.342	11,89%	-5,3	-15,4	-12,5
CARINSKI URED SPLIT	3.002	6,38%	6.317	9,67%	9.319	8,29%	3.289	6,11%	4.450	7,63%	7.739	6,90%	9,6	-29,6	-17,0
CARINSKI URED ŠIBENIK	644	1,37%	900	1,38%	1.544	1,37%	782	1,45%	502	0,86%	1.284	1,14%	21,4	-44,2	-16,8
CARINSKI URED ZADAR	897	1,91%	1.287	1,97%	2.184	1,94%	1.055	1,96%	958	1,64%	2.013	1,79%	17,6	-25,6	-7,8
CARINSKI URED PLOČE	46	0,10%	950	1,45%	996	0,89%	60	0,11%	695	1,19%	755	0,67%	30,4	-26,8	-24,2
CARINSKI URED DUBROVNIK	400	0,85%	352	0,54%	752	0,67%	373	0,69%	340	0,58%	713	0,64%	-6,8	-3,4	-5,2
PODRUČNI CARINSKI URED SPLIT	4.989	10,60%	9.806	15,01%	14.795	13,16%	5.559	10,33%	6.945	11,90%	12.504	11,15%	11,4	-29,2	-15,5
CARINSKA UPRAVA RH	47.073	100,00%	65.321	100,00%	112.394	100,00%	53.839	100,00%	58.350	100,00%	112.189	100,00%	14,4	-10,7	-0,2

Izvor podataka: IS CURH (na dan 15.2.2018.)

Broj novih vozila



Broj rabljenih vozila



**BROJ RABLJENIH MOTORNIH VOZILA IZ POREZNIH RJEŠENJA
PREMA NASTANKU I NAČINU UTVRĐIVANJA POREZNE OBVEZE
2017**

CARINSKI URED	NASTANAK POREZNE OBVEZE						NAČIN UTVRĐIVANJA POREZNE OBVEZE		
	Trgovci rabljenim motornim vozilima	Unos/uvoz za vlastite potrebe	Prenamjena	Uporaba u RH u trajanju dužem od 15 dana	Nepoznato	UKUPNO	Tablica 1 Pravilnika	Procjena	UKUPNO
Broj vozila									
CARINSKI URED ZAGREB I	5.718	3.762	37	5		9.522	4.144	5.378	9.522
CARINSKI URED ZAGREB II	7.620	4.724	47	13		12.404	7.097	5.307	12.404
CARINSKI URED KRAPINA	387	902	3			1.292	971	321	1.292
CARINSKI URED VARAŽDIN	2.983	2.014	13	3		5.013	3.263	1.750	5.013
CARINSKI URED KOPRIVNICA	887	1.896	11			2.794	1.534	1.260	2.794
CARINSKI URED SISAK	1.856	818	8			2.682	1.519	1.163	2.682
CARINSKI URED KARLOVAC	774	663	34			1.471	904	567	1.471
PODRUČNI CARINSKI URED ZAGREB	20.225	14.779	153	21	0	35.178	19.432	15.746	35.178
CARINSKI URED RIJEKA	953	1.772	3			2.728	1.504	1.224	2.728
CARINSKI URED PULA - POLA	1.484	1.157	21	1		2.663	1.877	786	2.663
CARINSKI URED GOSPIĆ	129	139	1			269	243	26	269
PODRUČNI CARINSKI URED RIJEKA	2.566	3.068	25	1	0	5.660	3.624	2.036	5.660
CARINSKI URED OSIJEK	3.755	1.796	7	1		5.559	4.972	587	5.559
CARINSKI URED SLAVONSKI BROD	1.120	1.269	5	1		2.395	1.544	851	2.395
CARINSKI URED VIROVITICA	105	436	3			544	65	479	544
CARINSKI URED VUKOVAR	325	221	1			547	461	86	547
PODRUČNI CARINSKI URED OSIJEK	5.305	3.722	16	2	0	9.045	7.042	2.003	9.045
CARINSKI URED SPLIT	1.876	2.462	20	2		4.360	4.067	293	4.360
CARINSKI URED ŠIBENIK	32	469		1	1	503	430	73	503
CARINSKI URED ZADAR	164	779	1			944	226	718	944
CARINSKI URED PLOČE	263	430	2			695	593	102	695
CARINSKI URED DUBROVNIK	108	251	1	1		361	273	88	361
PODRUČNI CARINSKI URED SPLIT	2.443	4.391	24	4	1	6.863	5.589	1.274	6.863
CARINSKA UPRAVA RH	30.539	25.960	218	28	1	56.746	35.687	21.059	56.746

% UDJELA

53,8

45,7

0,4

0,0

0,0

100,0

62,9

37,1

100,0

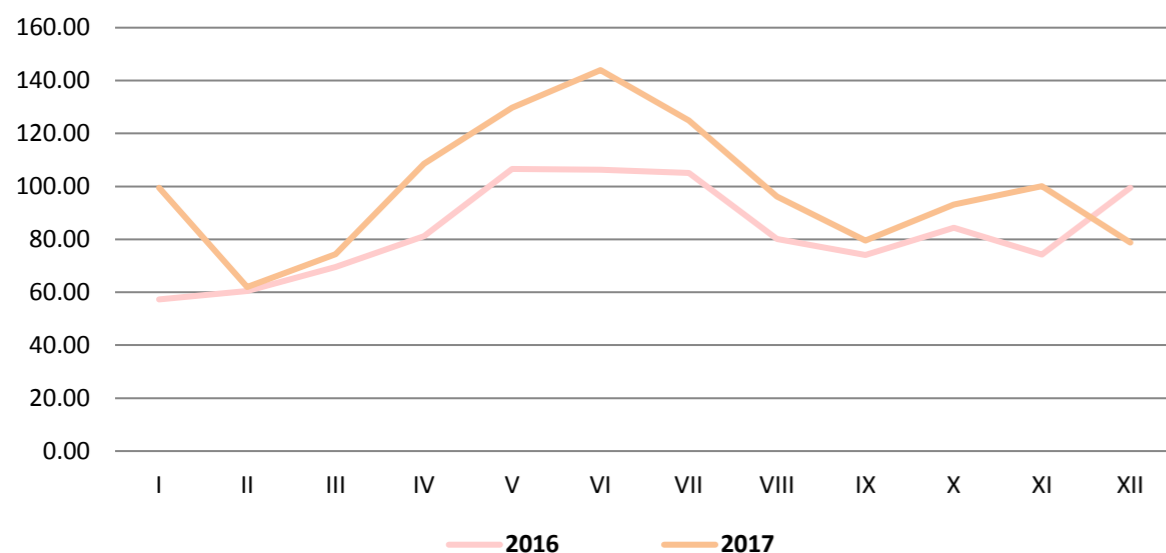
OSTVARENI PRIHODI/POVRATI OD POSEBNOG POREZA NA MOTORNA VOZILA

MJESEC	2016			2017			RAZLIKA: 2017.g. / 2016.g.		2017
	- OSOBNI AUTOMOBILI, OSTALA MOTORNA VOZILA, PLOVILA I ZRAKOPLOVI *	- MOTORNA VOZILA ** - od 01.07.2013.	UKUPNO - kn	- OSOBNI AUTOMOBILI, OSTALA MOTORNA VOZILA, PLOVILA I ZRAKOPLOVI *	- MOTORNA VOZILA ** - od 01.07.2013.	UKUPNO - kn			POVRAT POSEBNOG POREZA - ISPLAĆENI IZNOS - kn
SIJEČANJ	25.448	57.246.361	57.271.809	20.757	99.457.398	99.478.155	73,69%	42.206.346	3.184.288
VELJAČA	101.672	60.410.479	60.512.151	71.074	61.931.501	62.002.576	2,46%	1.490.425	5.229.384
OŽUJAK	10.137	69.488.010	69.498.147	16.969	74.395.872	74.412.840	7,07%	4.914.693	8.669.513
TRAVANJ	32.561	81.216.897	81.249.458	20.048	108.530.995	108.551.043	33,60%	27.301.584	3.336.065
SVIBANJ	118.778	106.517.043	106.635.821	62.975	129.629.288	129.692.263	21,62%	23.056.442	3.543.984
LIPANJ	89.988	106.226.489	106.316.477	9.293	143.900.452	143.909.746	35,36%	37.593.269	1.928.359
SRPANJ	23.351	105.030.771	105.054.121	46.791	124.821.130	124.867.921	18,86%	19.813.799	3.299.405
KOLOVOZ	29.472	80.183.106	80.212.578	71.443	96.126.749	96.198.191	19,93%	15.985.613	2.145.243
RUJAN	27.678	74.086.881	74.114.559	39.684	79.463.664	79.503.348	7,27%	5.388.789	3.470.423
LISTOPAD	16.680	84.403.900	84.420.580	25.750	93.181.858	93.207.609	10,41%	8.787.029	2.786.827
STUDENI	35.343	74.182.190	74.217.533	12.587	100.100.476	100.113.062	34,89%	25.895.530	1.846.821
PROSINAC	24.425	99.450.223	99.474.648	26.435	78.773.349	78.799.784	-20,78%	-20.674.864	6.179.165
UKUPNO	535.533	998.442.350	998.977.883	423.806	1.190.312.731	1.190.736.537	19,20%	191.758.654	45.619.479

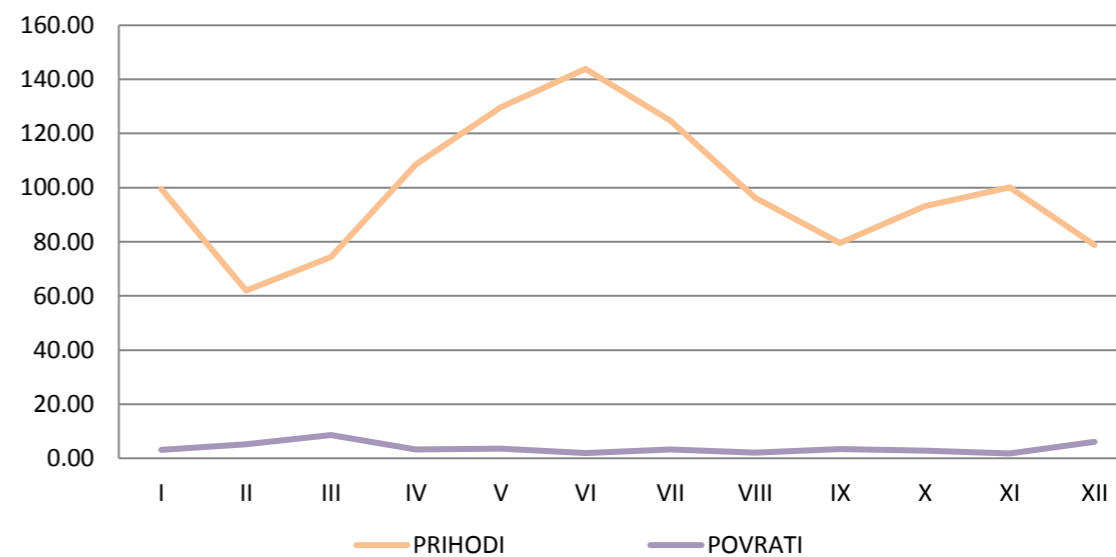
* prihodi vezani uz Zakon o posebnim porezima na osobne automobile, ostala motorna vozila, plovila i zrakoplove

** prihodi vezani uz Zakon o posebnom porezu na motorna vozila

PRIHODI - mil Kn



PRIHODI I ISPLAĆENI POVRATI 2017 - mil Kn



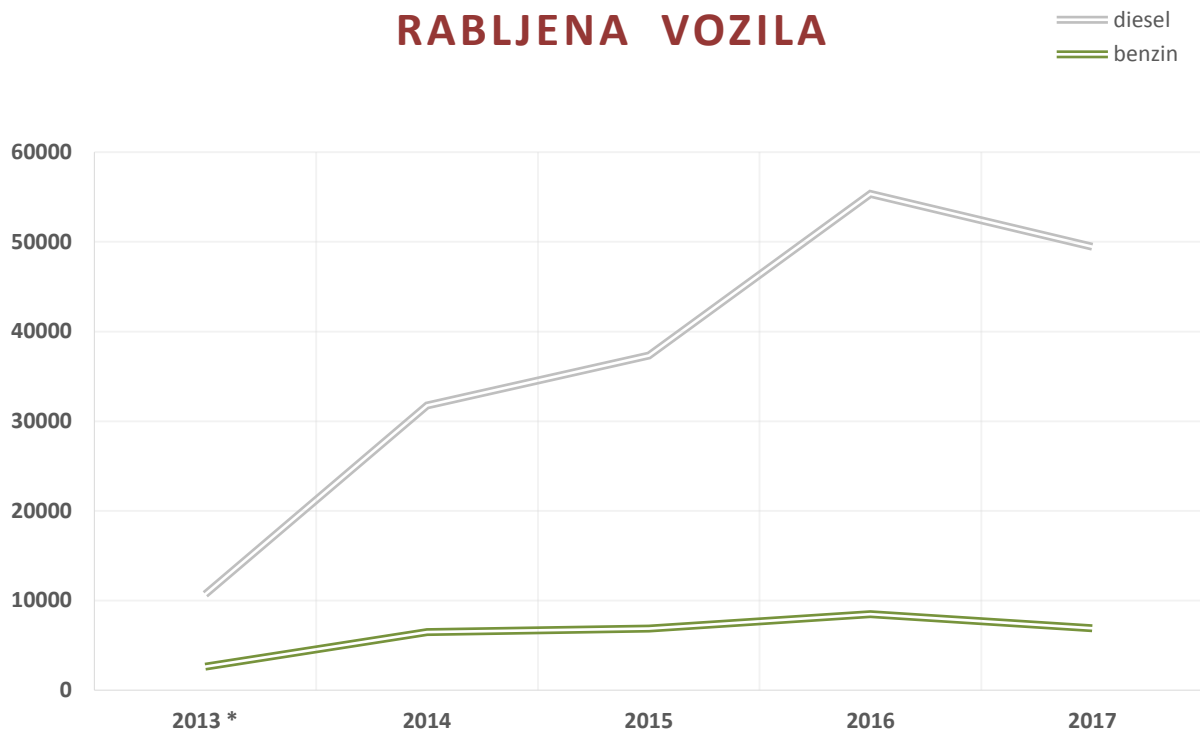
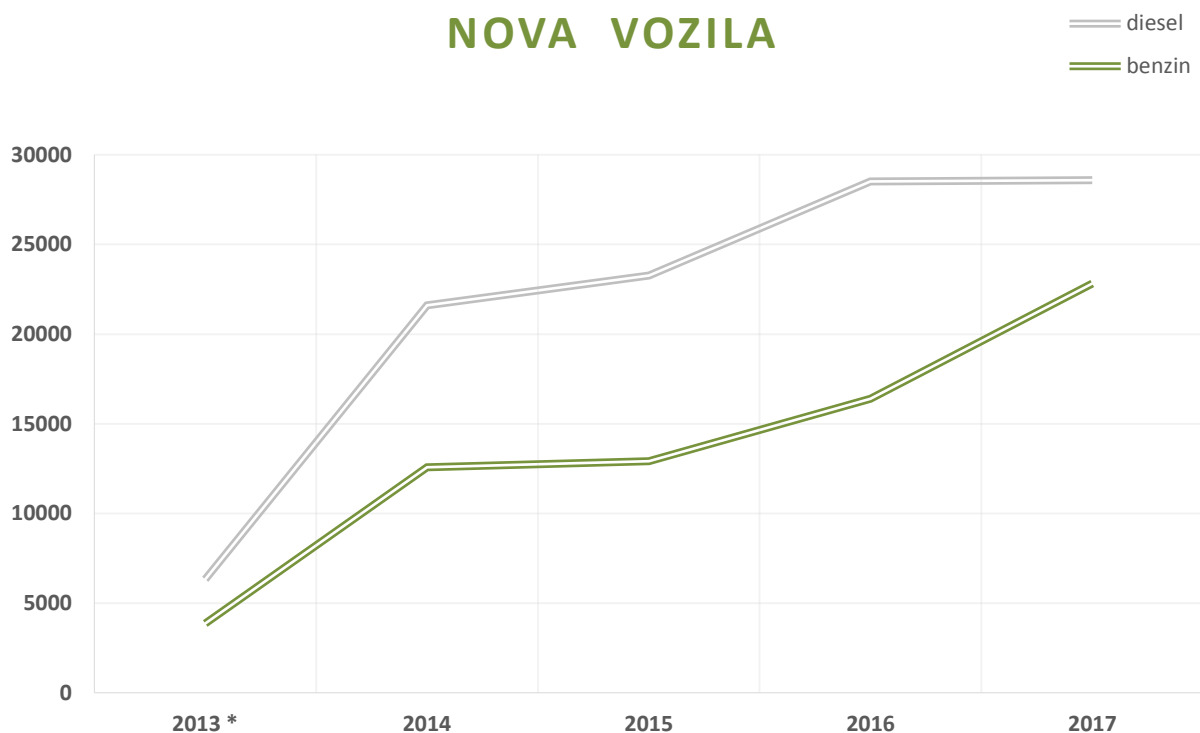
OBRAČUNATI POVRAT POSEBNOG POREZA NA MOTORNA VOZILA

MJESEC	BROJ VOZILA	Iznos povrata (kn)	BROJ VOZILA	Iznos povrata (kn)
	2016		2017	
SIJEČANJ	537	6.747.129	677	9.281.301
VELJAČA	558	7.162.133	213	3.492.278
OŽUJAK	655	6.460.641	404	4.259.673
TRAVANJ	353	4.723.227	229	2.442.534
SVIBANJ	349	2.815.487	199	2.006.948
LIPANJ	88	1.303.714	62	2.454.383
SRPANJ	178	1.534.542	397	4.975.080
KOLOVOZ	110	1.123.561	36	733.656
RUJAN	146	2.201.046	234	2.667.347
LISTOPAD	250	2.498.730	315	3.213.565
STUDENI	621	6.030.322	410	5.344.597
PROSINAC	707	5.888.074	1.382	15.134.777
UKUPNO	4.552	48.488.606	4.558	56.006.138

- PO CARINSKIM UREDIMA

CARINSKI URED	BROJ VOZILA	Iznos povrata (kn)	BROJ VOZILA	Iznos povrata (kn)
	2016		2017	
CARINSKI URED ZAGREB I	3.072	31.373.836	2.886	32.145.350
CARINSKI URED ZAGREB II	596	4.354.357	870	12.073.881
CARINSKI URED KRAPINA	81	309.308	9	38.510
CARINSKI URED VARAŽDIN	20	244.823	3	27.581
CARINSKI URED KOPRIVNICA	1	2.589	1	18.598
CARINSKI URED SISAK	5	18.794		
CARINSKI URED KARLOVAC				
PODRUČNI CARINSKI URED ZAGREB	3.775	36.303.707	3.769	44.303.920
CARINSKI URED RIJEKA	79	533.412	40	590.605
CARINSKI URED PULA - POLA	534	7.879.242	551	8.851.155
CARINSKI URED GOSPIĆ				
PODRUČNI CARINSKI URED RIJEKA	613	8.412.654	591	9.441.760
CARINSKI URED OSIJEK	35	608.002	35	638.292
CARINSKI URED SLAVONSKI BROD	1	8.916		
CARINSKI URED VIROVITICA	1	7.755		
CARINSKI URED VUKOVAR			2	35.115
PODRUČNI CARINSKI URED OSIJEK	37	624.673	37	673.407
CARINSKI URED SPLIT	121	3.086.126	122	1.317.062
CARINSKI URED ŠIBENIK	3	36.017	36	175.739
CARINSKI URED ZADAR				
CARINSKI URED PLOČE	1	1.801	2	82.322
CARINSKI URED DUBROVNIK	2	23.629	1	11.927
PODRUČNI CARINSKI URED SPLIT	127	3.147.573	161	1.587.050
CARINSKA UPRAVA RH	4.552	48.488.606	4.558	56.006.138

BROJ OSOBNIH I PICK-UP VOZILA (KN 8703) PREMA VRSTI GORIVA 2013* - 2017



* odnosi se na razdoblje 1.7. - 31.12.2013.

Izvor podataka: IS CURH (na dan 15.2.2018.)